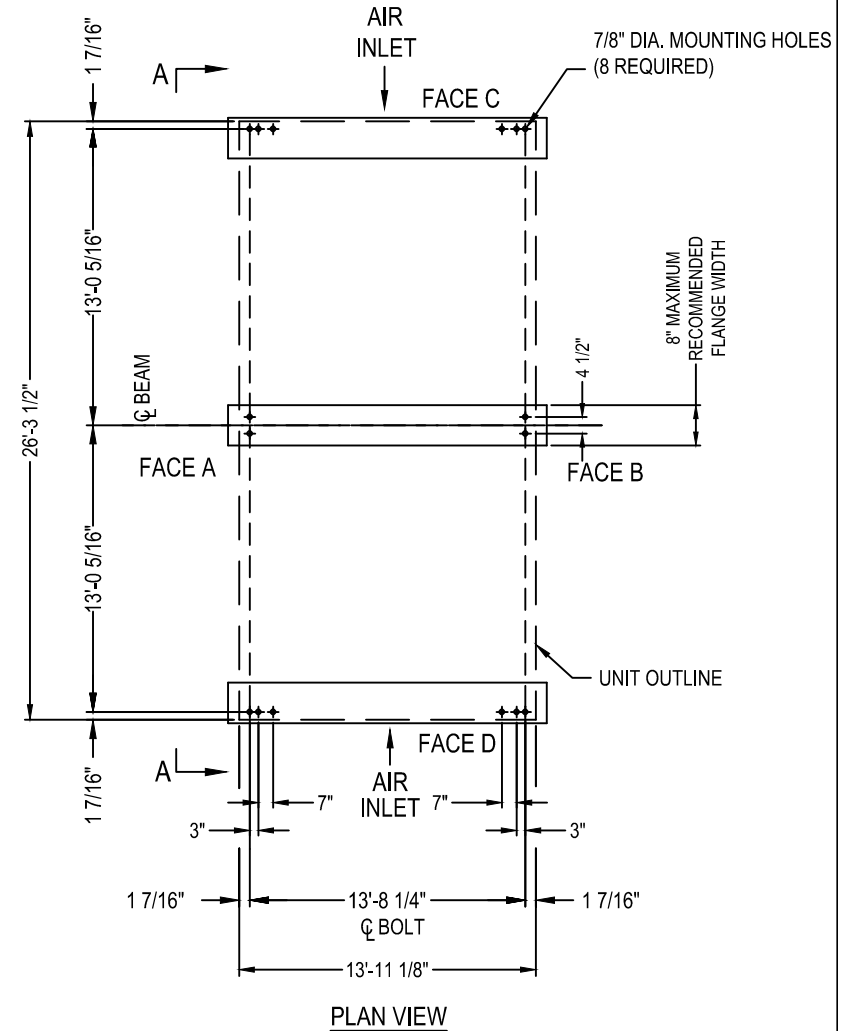
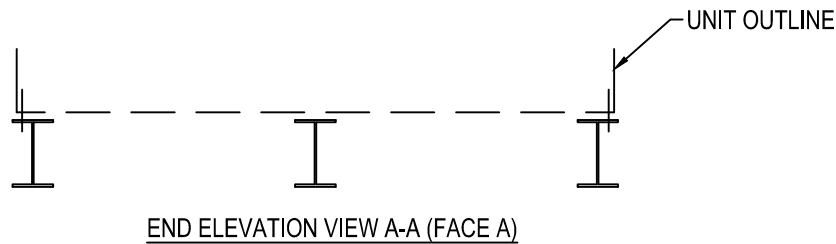


2014© Baltimore Aircoil Company. All Rights Reserved.

Model Number	Shipping Weight	Operating Weight
CXVT-712-1426-20	39107	69079
CXVT-741-1426-25	39107	69079
CXVT-766-1426-30	39107	69079
CXVT-807-1426-40	39107	69079
CXVT-844-1426-50	39107	69079
CXVT-894-1426-50	42385	72724
CXVT-933-1426-50	43798	74137
CXVT-965-1426-60	43798	74137
CXVT-1005-1426-75	43798	74137
CXVT-1057-1426-75	54230	86062
XECXVT629-1426-10	39107	69079
XECXVT698-1426-10	43798	74137
XECXVT734-1426-10	54230	86062
XECXVT790-1426-15	54230	86062
XECXVT832-1426-20	54230	86062
XECXVT866-1426-25	54230	86062
XECXVT895-1426-30	54230	86062
XECXVT942-1426-40	54230	86062

**NOTES:**

- Operating weights are for units with water level in basin at overflow.
- Supporting steelwork and anchor bolts to be designed and furnished by others.
- All supporting steel must be level at top.
- Beams should be selected in accordance with accepted structural practice.  
Minimum bearing width shall be 6". Maximum deflection of beam under unit to be 1/360 of span, not to exceed 1/2 inch.
- Weights shown are for standard unit. Some accessories may require weight adds. See respective accessory submittal drawing for weight adds.



[ ANCHORAGE PER ZONE 2B PER UBC 97/30 PSF ]

ORDER NO:

DATE:



**BALTIMORE AIRCOIL COMPANY**

**CXVT Evaporative Condenser Tabulated Steel Support  
Steel Support - Plan A Zone 2B**

DRAWING NUMBER:  
**CXVT-1426-TSS**

**Z**