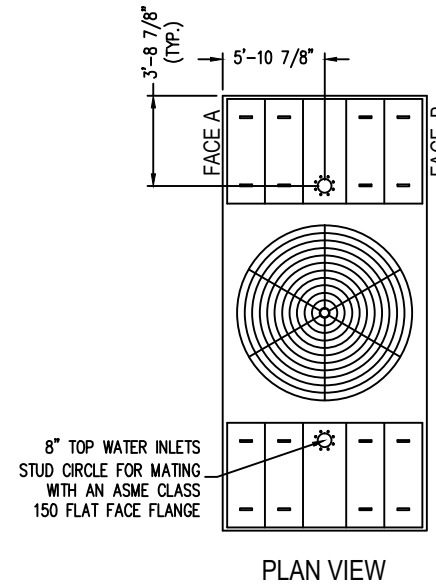


Notes

- 1) Drawings are not to scale. All dimensions are in feet and inches. Weights are in pounds and include options and accessories.
- 2) Unless otherwise indicated, connections 3" and smaller are MPT. Connections 4" and larger are grooved to suit a mechanical coupling and beveled for welding.
- 3) Field piping should be fabricated at time of installation. Pre-fabrication of pipe work is not recommended.
- 4) Do not support piping from unit connections. All necessary piping supports to be supplied by others.
- 5) For weight loadings and support requirements, refer to the suggested unit support drawing.
- 6) The area above the fan discharge must be unobstructed.
- 7) Due to height limitations on truck shipments, some items shown may ship loose for field installation.
- 8) Outlet connections are sized for pump suction application at the design flow rate. They are based on the maximum flow rate through the strainer with basin water at standard operating level.

MODEL NUMBER	SHIPPING WEIGHT	OPERATING WEIGHT	HEAVIEST SECTION WEIGHT
XES3E-1222-07J	11,871	24,901	11,871
XES3E-1222-07K	11,881	24,911	11,881
XES3E-1222-07L	11,951	24,981	11,951
XES3E-1222-07M	11,971	25,001	11,971
S3E-1222-07N	12,111	25,141	12,111
S3E-1222-07O	12,161	25,191	12,161
S3E-1222-07P	12,321	25,351	12,321
S3E-1222-07Q	12,331	25,361	12,331
S3E-1222-07R	13,091	26,121	13,091



ORDER NO:

DATE: **7/25/2013**



BALTIMORE AIRCOIL COMPANY

**3000E Unit Print
One Piece Units**

DRAWING NUMBER:
UP-1222-07