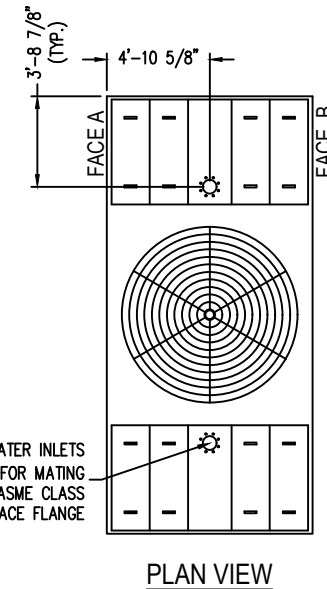


Notes

- 1) Drawings are not to scale. All dimensions are in feet and inches. Weights are in pounds and include options and accessories.
- 2) Unless otherwise indicated, connections 3" and smaller are MPT. Connections 4" and larger are grooved to suit a mechanical coupling and beveled for welding.
- 3) Field piping should be fabricated at time of installation. Pre-fabrication of pipe work is not recommended.
- 4) Do not support piping from unit connections. All necessary piping supports to be supplied by others.
- 5) For weight loadings and support requirements, refer to the suggested unit support drawing.
- 6) The area above the fan discharge must be unobstructed.
- 7) Due to height limitations on truck shipments, some items shown may ship loose for field installation.
- 8) Outlet connections are sized for pump suction application at the design flow rate. They are based on the maximum flow rate through the strainer with basin water at standard operating level.



STEEL LOUVERS
STEEL CASING PANELS

MODEL NO.	SHIPPING WEIGHT	OPERATING WEIGHT	HEAVIEST SECTION WEIGHT
S5E-1020-07K	12200	22550	12200
S5E-1020-07L	12270	22620	12270
S5E-1020-07M	12290	22640	12290
S5E-1020-07N	12430	22780	12430
S5E-1020-07O	12480	22830	12480
S5E-1020-07P	12640	22990	12640

ORDER NO: _____

DATE: _____



BALTIMORE AIRCOIL COMPANY

**5000E Unit Print
One Piece Units**

DRAWING NUMBER:
UP-1020-07