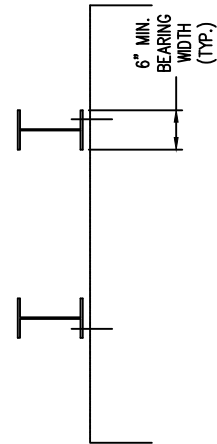
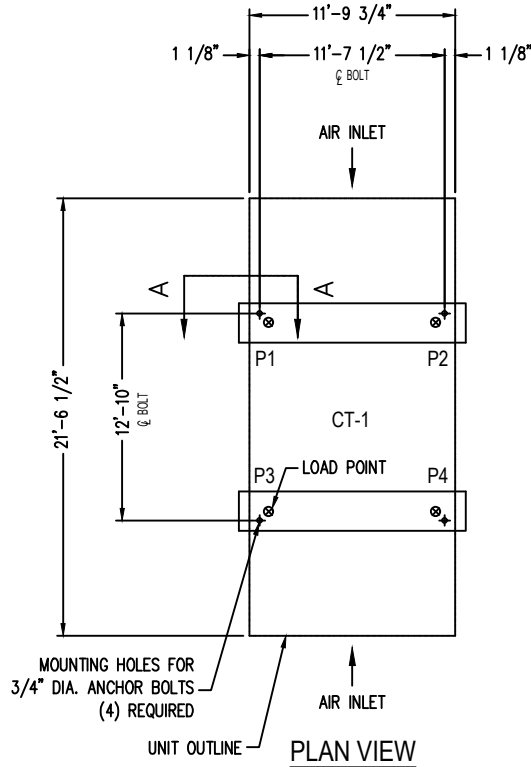


SECTION "A-A"



END ELEVATION



PLAN VIEW

Notes

- 1) Drawings are not to scale. All dimensions are in feet and inches. Weights are in pounds and include options and accessories.
- 2) Operating weight and weight loading are for units with water level in basin at overflow.
- 3) Unit support beams and anchor bolts to be designed and furnished by others.
- 4) Support beams must be flush and level at top.
- 5) Steel frame members perpendicular to the support beams and under the air inlet edges of unit must be at least 2" below the top of the support beams.

| MODEL NO.    | SHIPPING WEIGHT | OPERATING WEIGHT | POINT "1" | POINT "2" | POINT "3" | POINT "4" |
|--------------|-----------------|------------------|-----------|-----------|-----------|-----------|
| S5E-1222-07L | 14660           | 26740            | 6685      | 6685      | 6685      | 6685      |
| S5E-1222-07M | 14680           | 26760            | 6690      | 6690      | 6690      | 6690      |
| S5E-1222-07N | 14820           | 26900            | 6725      | 6725      | 6725      | 6725      |
| S5E-1222-07O | 14870           | 26950            | 6738      | 6738      | 6738      | 6738      |
| S5E-1222-07P | 15030           | 27110            | 6778      | 6778      | 6778      | 6778      |
| S5E-1222-07Q | 15040           | 27120            | 6780      | 6780      | 6780      | 6780      |

ORDER NO:

DATE:



**BALTIMORE  
AIRCOIL COMPANY**

**5000E Unit Support  
Standard Basins**

DRAWING NUMBER:

**1222-07**