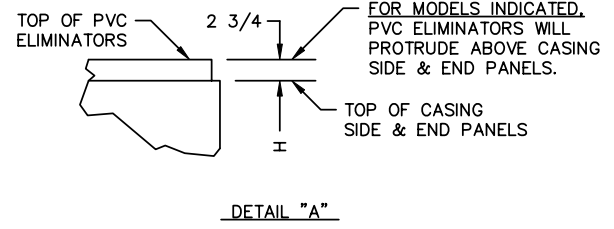


NOTE:

1. ALL LOCATION DIMENSIONS FOR COIL CONNECTIONS ARE APPROXIMATE AND SHOULD NOT BE USED FOR PREFABRICATION OF CONNECTING PIPING
2. FOR WEIGHT LOADING AND SUGGESTED STEEL SUPPORT REFER TO DRAWING BAC-15036B FOR STANDARD STEEL ARRANGEMENT OR DRAWING BAC-15090B FOR UNITS BEING PROVIDED WITH VIBRATION RAILS.



SEE DETAIL "A"

SEE DETAIL "A"

RIGHT HAND UNIT WITH SIDE OUT PUMP SUCTION

MODEL NO.	APPROX. SHIPPING WEIGHT (LBS)	APPROX. OPERATING WEIGHT (LBS)	F	H
VCL038-G	2400	3530	1'-1 1/4"	5'-2 1/4"
VCL044-F	2760	3940	1'-9 3/4"	6'-1"
VCL048-G	2790	3970	1'-9 3/4"	6'-1"
VCL054-H	2810	3990	1'-9 3/4"	6'-1"
VCL058-G	3180	4370	2'-6 1/4"	6'-7 1/4"
VCL065-H	3200	4390	2'-6 1/4"	6'-7 1/4"
VCL073-H	3610	4820	3'-2 3/4"	7'-3 3/4"
VCL079-J	3680	4890	3'-2 3/4"	7'-3 3/4"

B.A.C. ORDER NO.	BALTIMORE AIRCOIL	EVAPORATIVE CONDENSER	
DATE		DWG NO. BAC-15025B	A