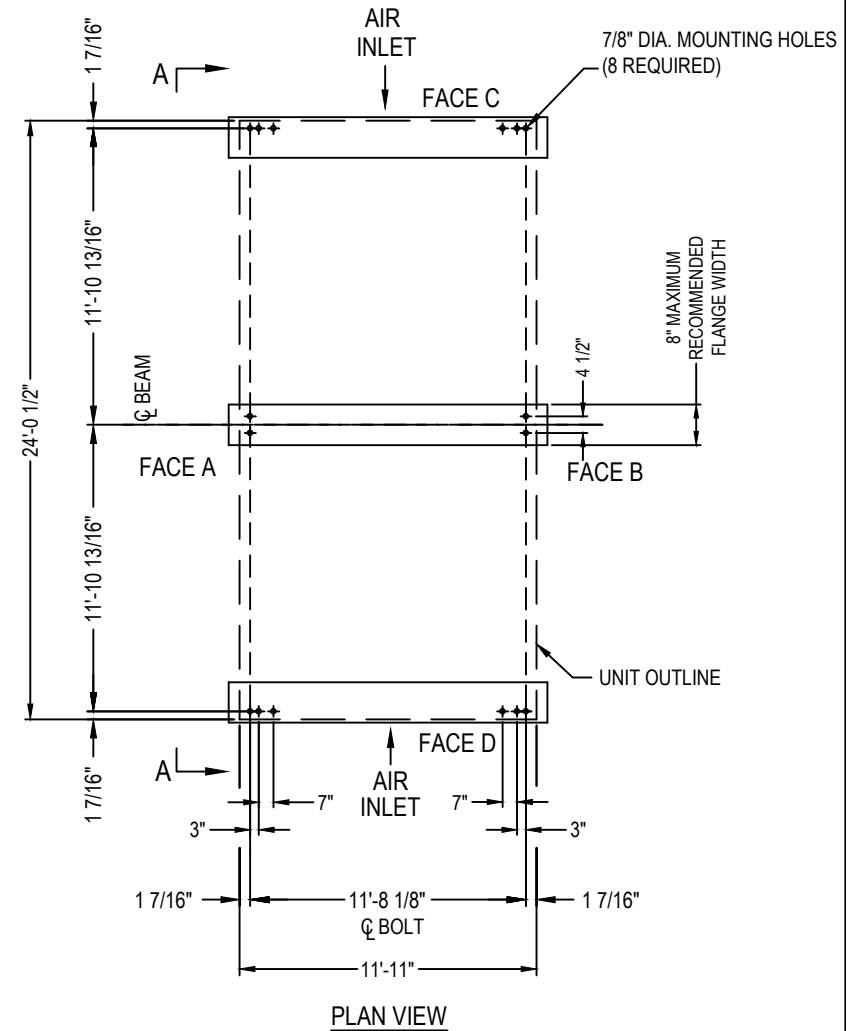
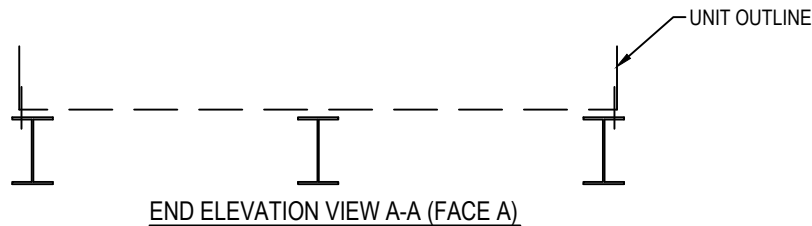


2014© Baltimore Aircoil Company. All Rights Reserved.

Model Number	Shipping Weight	Operating Weight
CXVT-617-1224-15	37521	62285
CXVT-650-1224-20	37521	62285
CXVT-676-1224-25	37521	62285
CXVT-700-1224-40	34749	59208
CXVT-731-1224-50	34749	59208
CXVT-754-1224-60	34749	59208
CXVT-778-1224-50	37521	62285
CXVT-813-1224-50	38779	63544
CXVT-843-1224-60	38779	63544
CXVT-887-1224-60	47845	73889
XECXVT540-1224-10	34749	59208
XECXVT605-1224-10	38779	63544
XECXVT636-1224-10	47845	73889
XECXVT684-1224-15	47845	73889
XECXVT721-1224-20	47845	73889
XECXVT750-1224-25	47845	73889
XECXVT775-1224-30	47845	73889

NOTES:

- Operating weights are for units with water level in basin at overflow.
- Supporting steelwork and anchor bolts to be designed and furnished by others.
- All supporting steel must be level at top.
- Beams should be selected in accordance with accepted structural practice.
Minimum bearing width shall be 6". Maximum deflection of beam under unit to be 1/360 of span, not to exceed 1/2 inch.
- Weights shown are for standard unit. Some accessories may require weight adds. See respective accessory submittal drawing for weight adds.



[ANCHORAGE PER ZONE 2B PER UBC 97/30 PSF]

ORDER NO:

DATE:



BALTIMORE AIRCOIL COMPANY

**CXVT Evaporative Condenser Tabulated Steel Support
Steel Support - Plan A Zone 2B**

DRAWING NUMBER:
CXVT-1224-TSS

Z