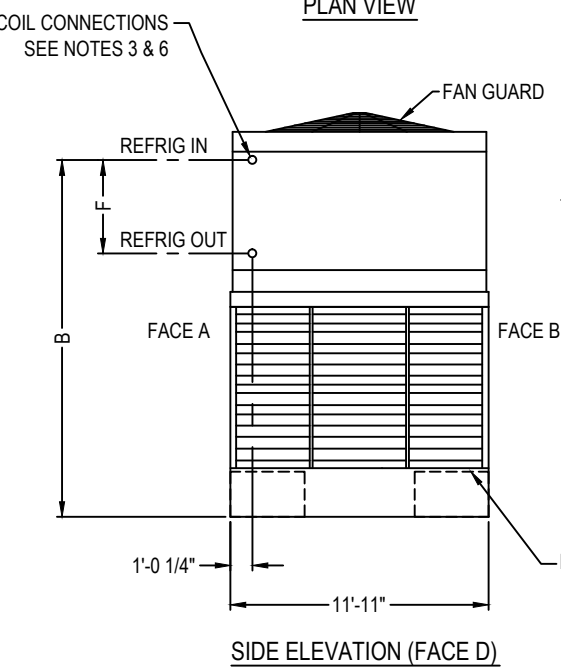
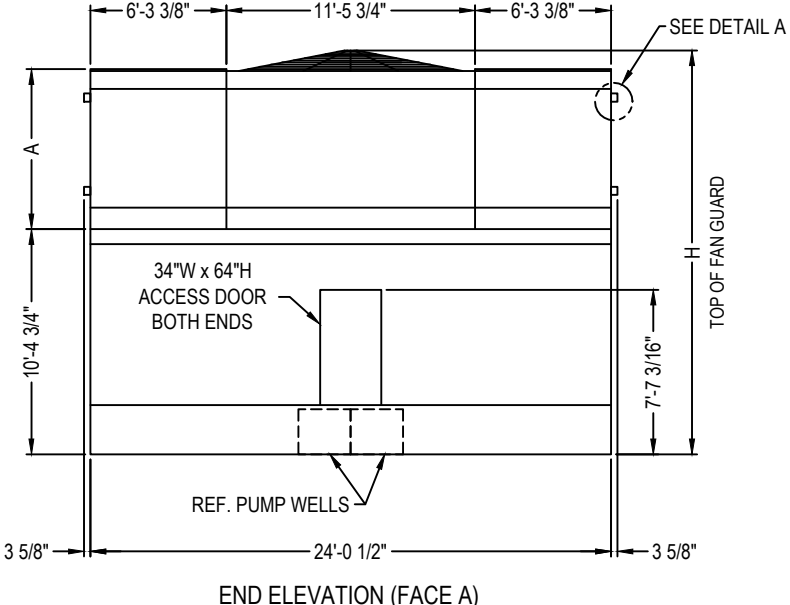
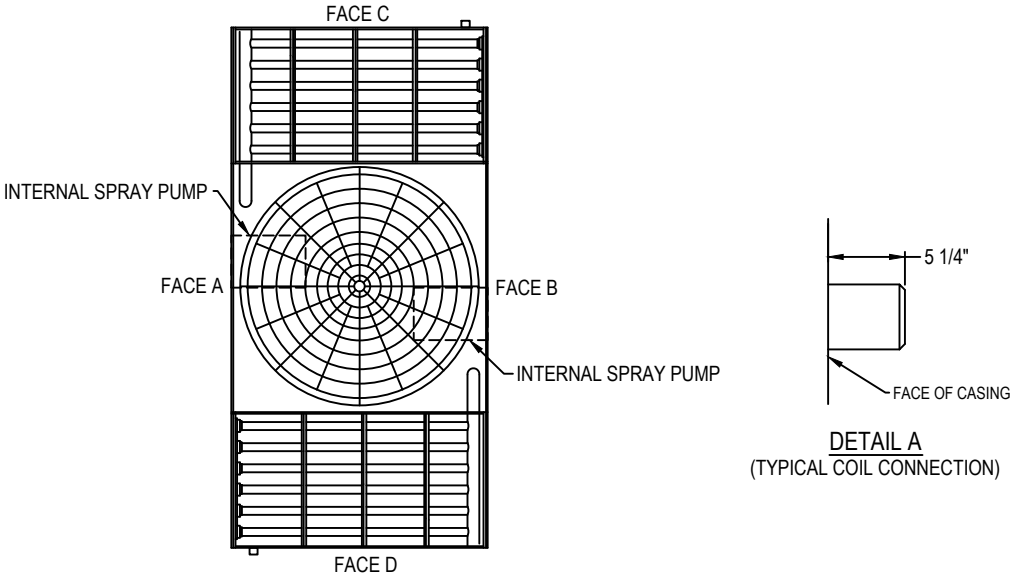


2014© Baltimore Aircoil Company. All Rights Reserved.

Model Number	Operating Weight	SHIPPING WEIGHT (See Note 7)				F	H	A	B
		Total	Lower Section	Plenum Section	Coil Section				
CXVT-617-1224-15	62285	37521	13072	6145	9152	4'-4"	18'-11"	7'-4 3/4"	16'-8 1/4"
CXVT-650-1224-20	62285	37521	13072	6145	9152	4'-4"	18'-11"	7'-4 3/4"	16'-8 1/4"
CXVT-676-1224-25	62285	37521	13072	6145	9152	4'-4"	18'-11"	7'-4 3/4"	16'-8 1/4"
CXVT-700-1224-40	59208	34749	13072	6145	7766	3'-7"	18'-11"	7'-4 3/4"	16'-8 1/4"
CXVT-731-1224-50	59208	34749	13072	6145	7766	3'-7"	18'-11"	7'-4 3/4"	16'-8 1/4"
CXVT-754-1224-60	59208	34749	13072	6145	7766	3'-7"	18'-11"	7'-4 3/4"	16'-8 1/4"
CXVT-778-1224-50	62285	37521	13072	6145	9152	4'-4"	18'-11"	7'-4 3/4"	16'-8 1/4"
CXVT-813-1224-50	63544	38779	13072	6145	9781	3'-10"	18'-11"	7'-4 3/4"	16'-7 1/4"
CXVT-843-1224-60	63544	38779	13072	6145	9781	3'-10"	18'-11"	7'-4 3/4"	16'-7 1/4"
CXVT-887-1224-60	73889	47845	13092	6238	14257	6'-1"	20'-7"	9'-1"	18'-2 1/2"
XECXVT540-1224-10	59208	34749	13072	6145	7766	3'-7"	18'-11"	7'-4 3/4"	16'-8 1/4"
XECXVT605-1224-10	63544	38779	13072	6145	9781	3'-10"	18'-11"	7'-4 3/4"	16'-7 1/4"
XECXVT636-1224-10	73889	47845	13092	6238	14257	6'-1"	20'-7"	9'-1"	18'-2 1/2"
XECXVT684-1224-15	73889	47845	13092	6238	14257	6'-1"	20'-7"	9'-1"	18'-2 1/2"
XECXVT721-1224-20	73889	47845	13092	6238	14257	6'-1"	20'-7"	9'-1"	18'-2 1/2"
XECXVT750-1224-25	73889	47845	13092	6238	14257	6'-1"	20'-7"	9'-1"	18'-2 1/2"
XECXVT775-1224-30	73889	47845	13092	6238	14257	6'-1"	20'-7"	9'-1"	18'-2 1/2"



- NOTES:**
1. All dimensions are in feet and inches. Weights are in pounds.
 2. Dimensions showing location of coil connections are approximate and should not be used for prefabrication of connecting piping.
 3. As standard, coil connections are beveled for welding.
 4. The area above the discharge of the fan must be unobstructed.
 5. For weight loading and support requirements refer to the suggested steel support drawing.
 6. Do not support piping from unit.
 7. Weights shown for each section. Each cell consists of one lower, one plenum, and two coil sections.

ORDER NO:
DATE:



CXVT Evaporative Condenser Tabulated Unit Print
Single Side Connection
 DRAWING NUMBER:
CXVT-1224-TUP **Z**