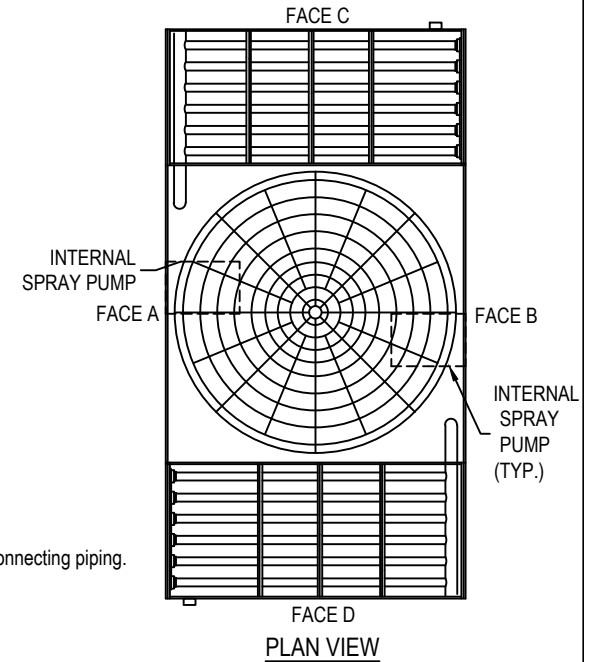


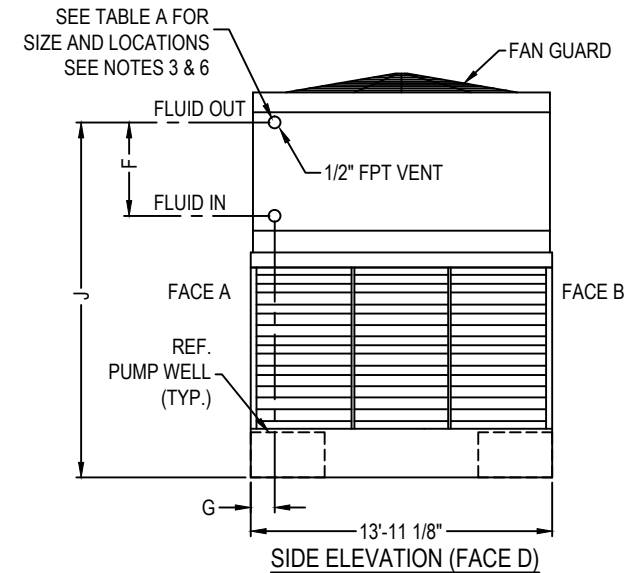
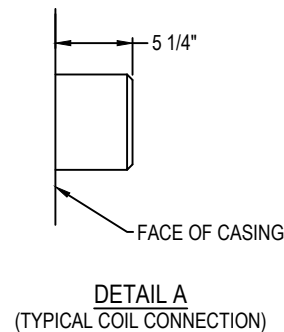
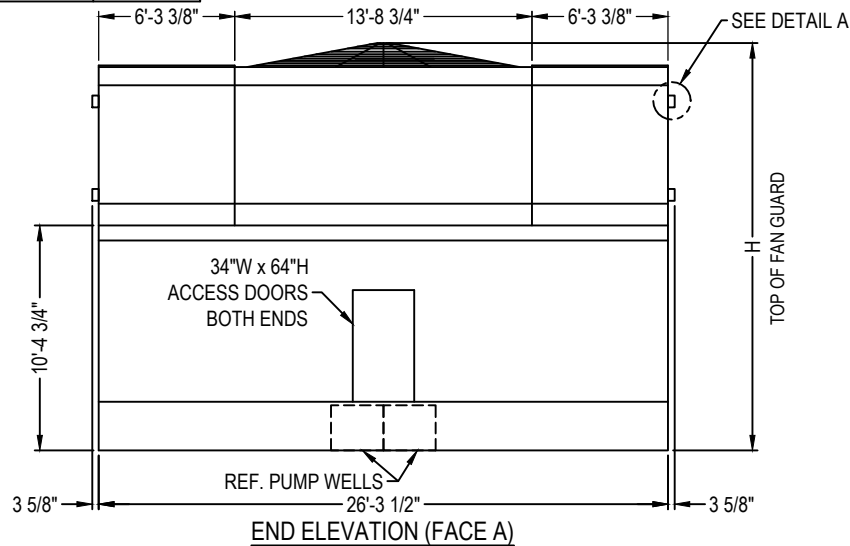
Model Number	Operating Weight	Shipping Weight				F			J			H
		Total	Lower Section	Plenum Section	Coil Section (See Note 7)	4" Conn.	6" Conn	8" Conn	4" Conn.	6" Conn	8" Conn	
FXV3-1426-20D-xx	67700	37420	13180	6360	8940	3'-6 1/2"	3'-6 1/2"	3'-8 3/4"	16'-8 1/4"	16'-7 1/4"	16'-6 3/8"	19'-10"
FXV3-1426-24D-xx	71060	39640	13180	6360	10050	4'-3 3/4"	4'-3 3/4"	4'-6"	16'-8 1/4"	16'-7 1/4"	16'-6 3/8"	19'-10"
FXV3-1426-24T-xx	71085	39650	13180	6360	10055	N/A	3'-10 3/8"	3'-10 3/8"	N/A	16'-7 1/4"	16'-7 1/4"	19'-10"
FXV3-1426-24Q-xx	71610	39890	13180	6360	10175	N/A	4'-1 7/8"	3'-11 7/8"	N/A	16'-7 3/8"	16'-7 3/8"	19'-10"
FXV3-1426-28D-xx	75020	42530	13180	6470	11440	6'-1 3/8"	6'-1 3/8"	6'-1 3/8"	18'-2 1/2"	18'-2 1/2"	18'-2 1/2"	21'-6 1/4"
FXV3-1426-30T-xx	78040	44520	13180	6470	12435	N/A	6'-1 3/8"	5'-11 3/8"	N/A	18'-2 1/2"	18'-1 1/2"	21'-6 1/4"
FXV3-1426-32D-xx	78315	44710	13180	6470	12530	6'-1 3/8"	6'-1 3/8"	6'-1 3/8"	18'-2 1/2"	18'-2 1/2"	18'-2 1/2"	21'-6 1/4"
FXV3-1426-32Q-xx	80065	45750	13180	6470	13050	N/A	6'-1 3/8"	6'-1 3/8"	N/A	18'-2 1/2"	18'-2 1/2"	21'-6 1/4"
FXV3-1426-36D-xx	81615	46890	13180	6470	13620	6'-1 3/8"	6'-1 3/8"	6'-1 3/8"	18'-2 1/2"	18'-2 1/2"	18'-2 1/2"	21'-6 1/4"
FXV3-1426-36T-xx	81795	47000	13180	6470	13675	N/A	6'-1 3/8"	6'-1 3/8"	N/A	18'-2 1/2"	18'-2 1/2"	21'-6 1/4"
FXV3-1426-36Q-xx	81290	46560	13180	6470	13455	N/A	6'-1 3/8"	6'-1 3/8"	N/A	18'-2 1/2"	18'-2 1/2"	21'-6 1/4"



NOTES:

1. All dimensions are in feet and inches. Weights are in pounds.
2. Dimensions showing location of coil connections are approximate and should not be used for prefabrication of connecting piping.
3. As standard, coil connections are beveled for welding.
4. The area above the discharge of the fan must be unobstructed.
5. For weight loading and support requirements refer to the suggested steel support drawing.
6. Do not support piping from unit.
7. Unit includes two coil sections. Weight shown for one coil section.
8. Top of Fan Guard dimension may include cowl extension which may not be shown on print.

Connection Size	Maximum GPM (Per Cell)
4"	800
6"	1600
8"	2400



ORDER NO:

DATE:



Baltimore Aircoil

Series FXV Unit Print
Single Side Connection

DRAWING NUMBER:
FXV-1426-xxx-xx-UP

-