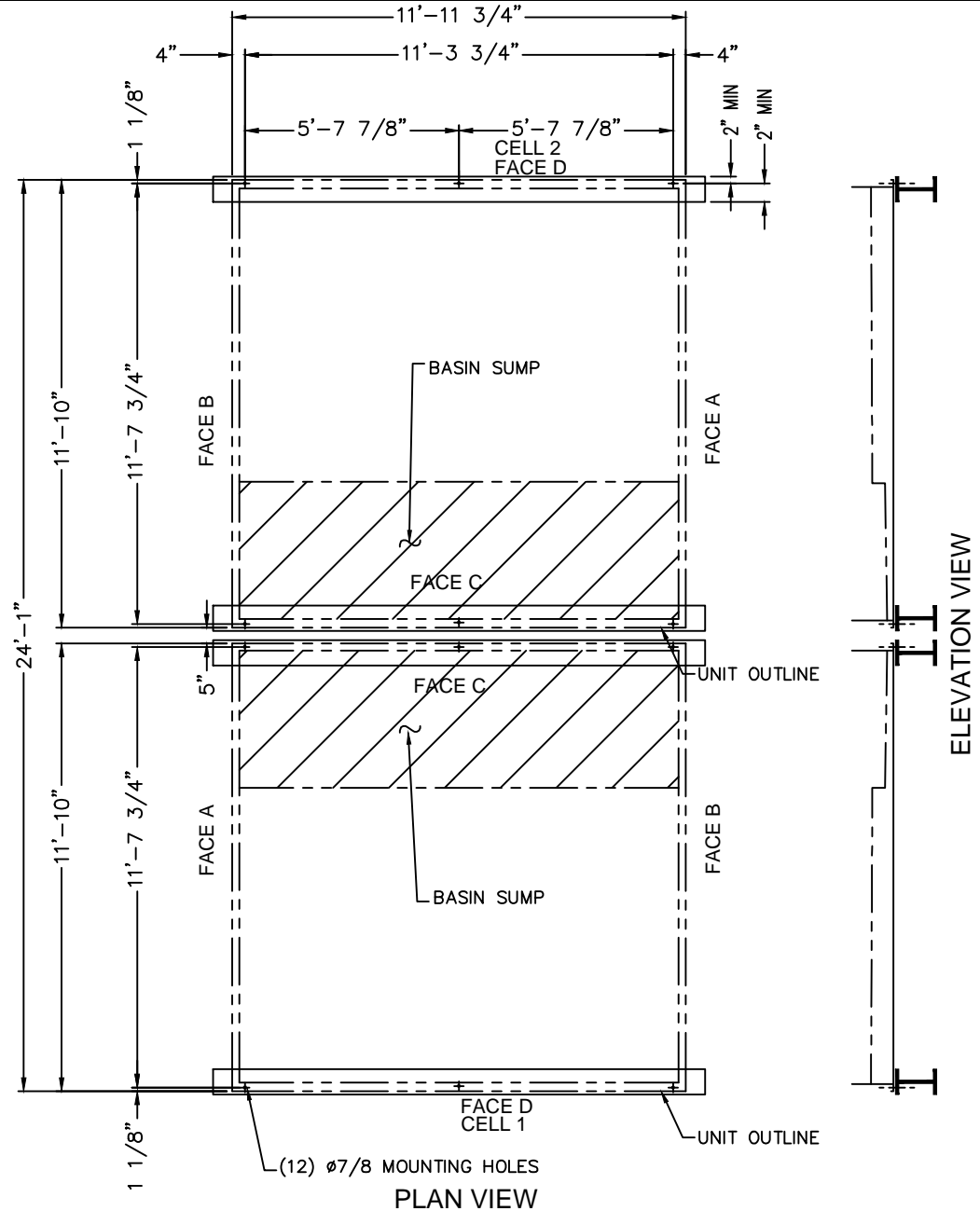


Notes

- 1) Drawings are not to scale. All dimensions are in feet and inches. Weights are in pounds and include options and accessories.
- 2) Operating weight and weight loading are for units with water level in basin at overflow.
- 3) Unit support beams and anchor bolts to be designed and furnished by others.
- 4) Support beams must be flush and level at top.
- 5) All supporting steelwork must be designed in accordance with accepted structural practice. Maximum deflection of steelwork under unit to be 1/360 of span, not to exceed 1/2".
- 6) Each beam should be designed, as a minimum, for 65% of the total unit operation weight applied as a uniformly distributed load.

PLAN A STEEL SUPPORT

Model Number	Approx, Shipping Weight	Approx, Operating Weight
PCC-0498-2412N020	33670	48750
PCC-0530-2412N030	30960	45870
PCC-0586-2412N030	38130	53450
PCC-0618-2412N040	35680	50860
PCC-0660-2412N050	35740	50920
PCC-0692-2412N050	40330	55780
PCC-0730-2412N060	40430	55880
PCC-0792-2412N080	40810	56250
PCC-0710-2412N050	42520	58210
PCC-0750-2412N060	42620	58310
PCC-0790-2412N080	40660	56200
PCC-0812-2412N080	43000	58680



ORDER NO:

DATE:



BALTIMORE AIRCOIL COMPANY

**PCC Evaporative Condenser
Tabulated Steel Support - Plan A**

DRAWING NUMBER:
SS-PCI-2412