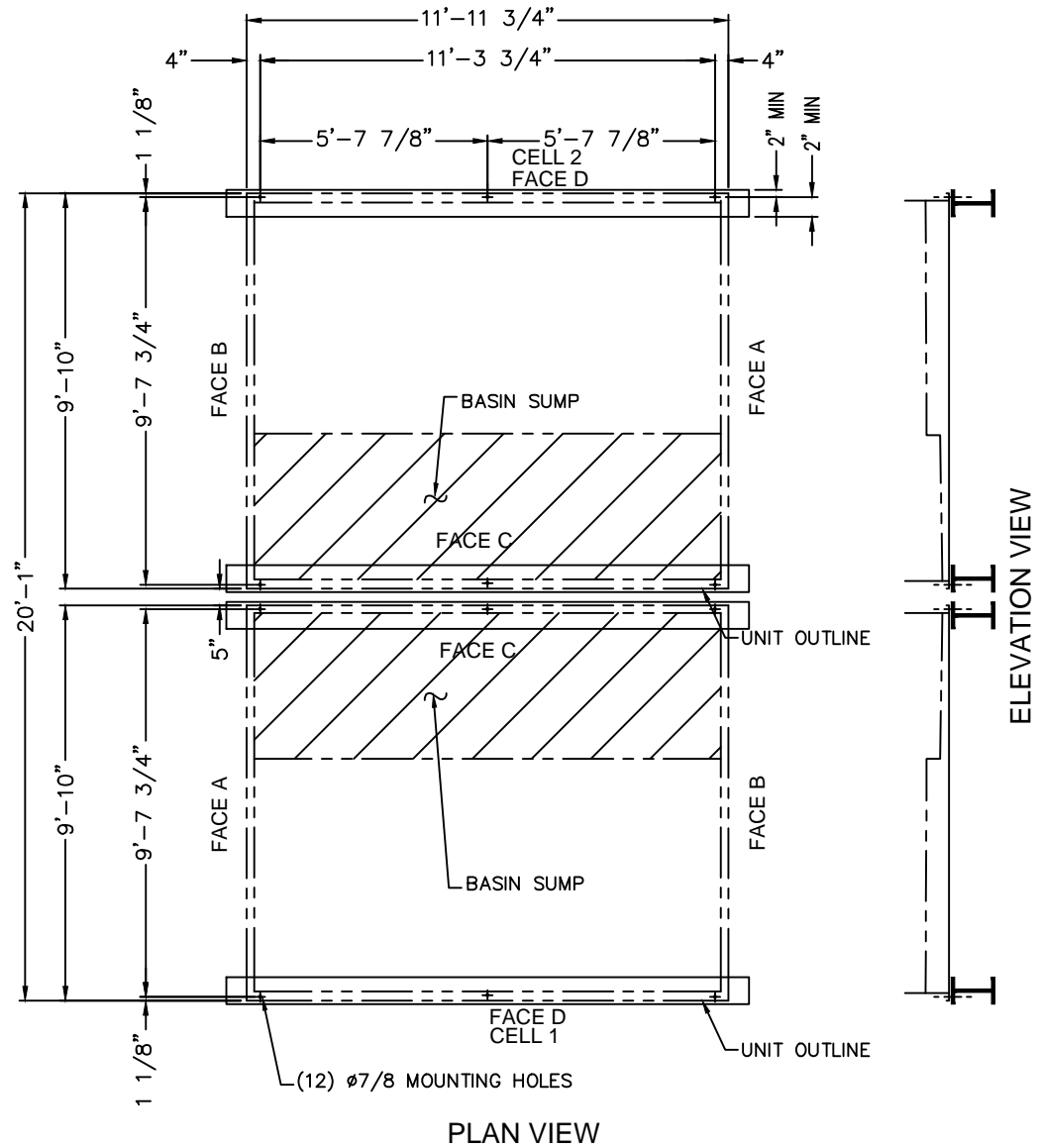


Notes

- 1) Drawings are not to scale. All dimensions are in feet and inches, weights are in pounds. Refer to submittal drawings for actual dimensions and weights.
- 2) Operating weight and weight loading are for units with water level in basin at overflow.
- 3) Unit support beams and anchor bolts to be designed and furnished by others.
- 4) Support beams must be flush and level at top.
- 5) All supporting steelwork must be designed in accordance with accepted structural practice. Maximum deflection of steelwork under unit to be 1/360 of span, not to exceed 1/2".
- 6) Each beam should be designed, as a minimum, for 65% of the total unit operation weight applied as a uniformly distributed load.

Model Number	Approx, Shipping Weight	Approx, Operating Weight
PFI-2012N-2DXDS-X2	21260	32350
PFI-2012N-2DXES-X2	24130	35800
PFI-2012N-3DXDS-X2	26300	39360
PFI-2012N-3DXES-X2	28010	41140
PFI-2012N-4DXDS-X2	26550	39580
PFI-2012N-4DXES-X2	31790	46380
PFI-2012N-5DXDS-X2	30890	45590
PFI-2012N-6DXES-X2	33960	49240



ORDER NO:

DATE:



BALTIMORE AIRCOIL COMPANY

**PFI Closed Circuit Cooling Tower
Tabulated Steel Support - Plan A**

DRAWING NUMBER:
SS-PFI-2012