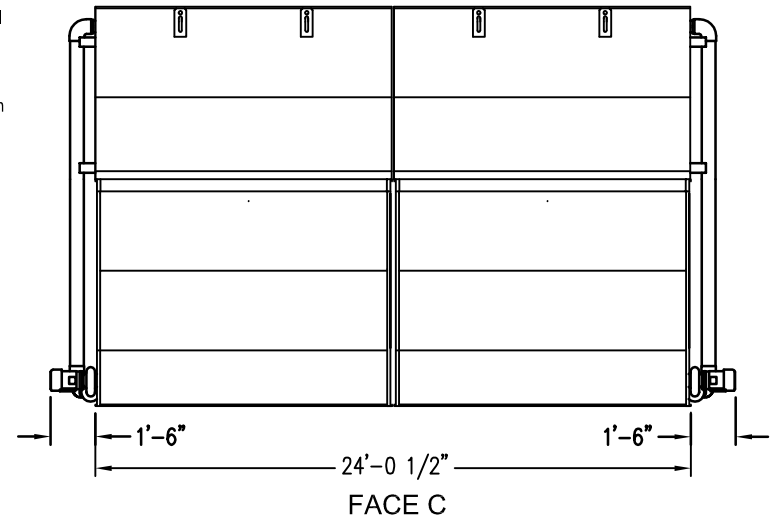
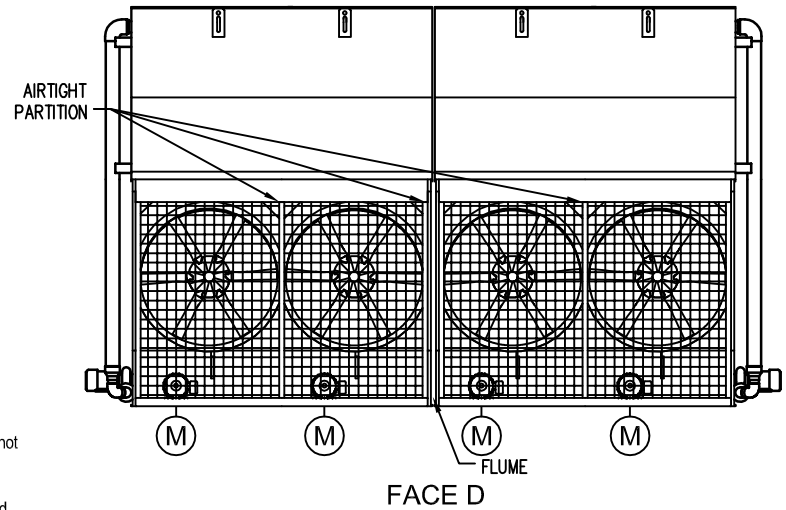


Notes

- 1) All dimensions are in feet and inches. Weights are in pounds and do not include options and accessories.
- 2) Unless otherwise indicated, connections 3" and smaller are NPT. Connections 4" and larger are grooved to suit a mechanical coupling and beveled for welding.
- 3) Dimensions showing location of coil connections are approximate and should not be used for prefabrication of connecting piping.
- 4) For weight loadings and support requirements, refer to the suggested steel support drawing.
- 5) The area above the discharge must be unobstructed.
- 6) Piping must not be supported by the unit inlet or outlet connections.
- 7) M = Motor location, M1 = Large Motor Location, M2 = Small Motor Location



MODEL NO.	APPROX. SHIPPING WEIGHT	APPROX. OPERATING WEIGHT	HEAVIEST SECTION (COIL)	F	H
VCA-662A	24750	36900	8410	2'-9 1/4"	13'-9 1/2"
VCA-680A	27990	40310	10090	3'-6 1/2"	14'-6 3/4"
VCA-750A	28110	40430	10090	3'-6 1/2"	14'-6 3/4"
VCA-804A	28160	40480	10090	3'-6 1/2"	14'-6 3/4"
VCA-760A	31470	43970	11770	4'-3 3/4"	15'-4"
VCA-814A	31520	44020	11770	4'-3 3/4"	15'-4"
VCA-858A	33460	46080	12740	4'-3 3/4"	15'-4"
VCA-946A	33740	46360	12740	4'-3 3/4"	15'-4"
VCA-866A	37090	49910	14580	5'-1"	16'-1 1/4"
VCA-928A	37140	49960	14580	5'-1"	16'-1 1/4"
VCA-1024A	37420	50240	14580	5'-1"	16'-1 1/4"

ORDER NO:

DATE:



Baltimore Aircoil

VCA Unit Print

10'x24' RH

DRAWING NUMBER: