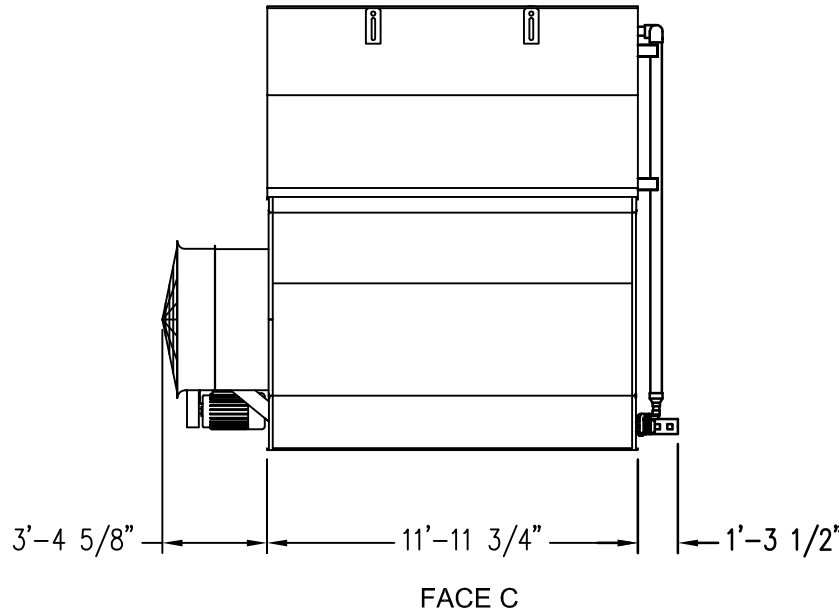
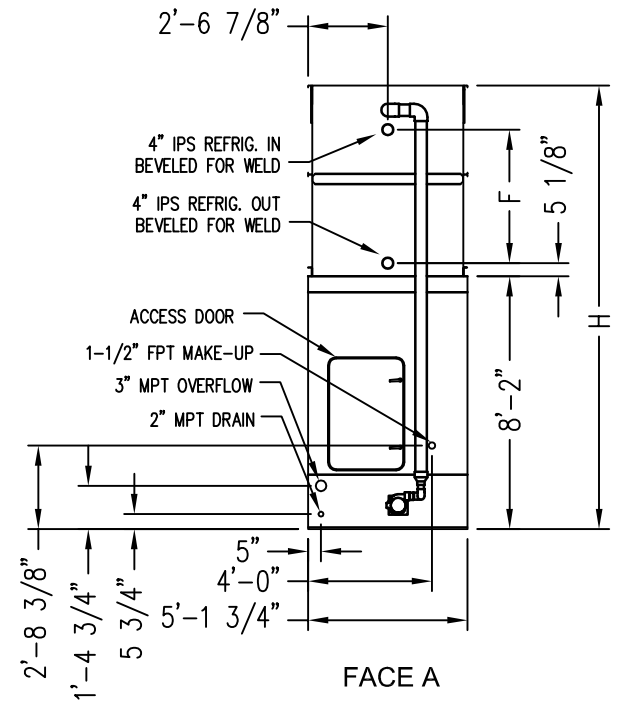


FACE B



FACE C



FACE A

MODEL NO.	APPROX. SHIPPING WEIGHT	APPROX. OPERATING WEIGHT	HEAVIEST SECTION (COIL)	F	H
VCA-122A	6390	9490	4350	2'-9 1/4"	12'-9 1/2"
VCA-138A	6400	9500	4350	2'-9 1/4"	12'-9 1/2"
VCA-150A	6430	9530	4350	2'-9 1/4"	12'-9 1/2"
VCA-161A	6440	9540	4350	2'-9 1/4"	12'-9 1/2"
VCA-154A	7270	10420	5220	3'-6 1/2"	13'-6 3/4"
VCA-170A	7300	10450	5220	3'-6 1/2"	13'-6 3/4"
VCA-182A	7310	10460	5220	3'-6 1/2"	13'-6 3/4"
VCA-178A	8170	11360	6090	4'-3 3/4"	14'-4"
VCA-191A	8180	11370	6090	4'-3 3/4"	14'-4"

Notes

- 1) All dimensions are in feet and inches. Weights are in pounds and do not include options and accessories.
- 2) Unless otherwise indicated, connections 3" and smaller are NPT. Connections 4" and larger are grooved to suit a mechanical coupling and beveled for welding.
- 3) Dimensions showing location of coil connections are approximate and should not be used for prefabrication of connecting piping.
- 4) For weight loadings and support requirements, refer to the suggested steel support drawing.
- 5) The area above the discharge must be unobstructed.
- 6) Piping must not be supported by the unit inlet or outlet connections.
- 7) M = Motor location, M1 = Large Motor Location, M2 = Small Motor Location

ORDER NO: \_\_\_\_\_

DATE: \_\_\_\_\_



Baltimore Aircoil

VCA Unit Print  
5'x12'

DRAWING NUMBER: \_\_\_\_\_