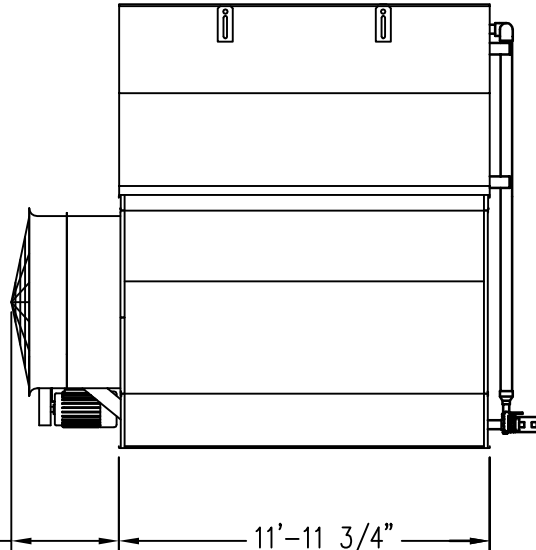
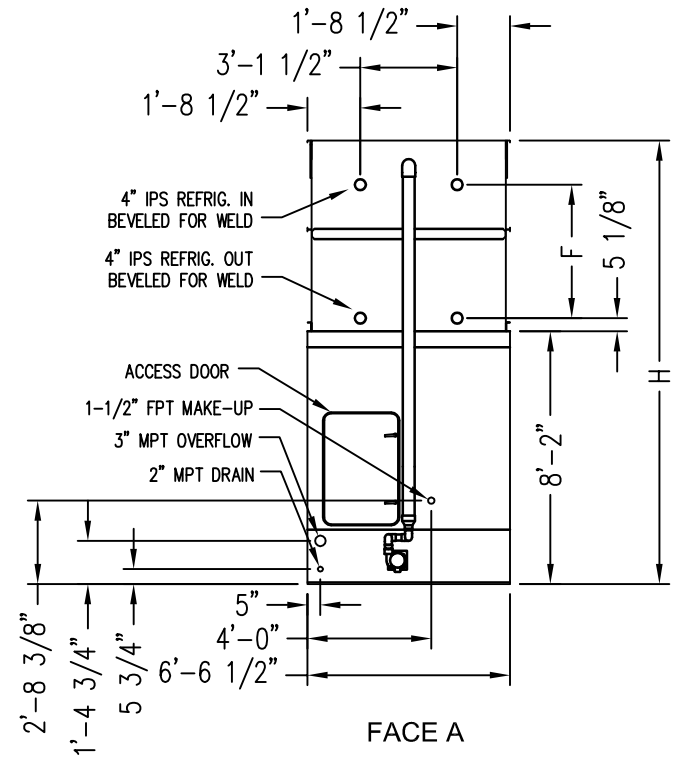


FACE B



FACE C



FACE A

3'-5 5/8" 11'-11 3/4" 1'-8 3/8"

Notes

- 1) All dimensions are in feet and inches. Weights are in pounds and do not include options and accessories.
- 2) Unless otherwise indicated, connections 3" and smaller are NPT. Connections 4" and larger are grooved to suit a mechanical coupling and beveled for welding.
- 3) Dimensions showing location of coil connections are approximate and should not be used for prefabrication of connecting piping.
- 4) For weight loadings and support requirements, refer to the suggested steel support drawing.
- 5) The area above the discharge must be unobstructed.
- 6) Piping must not be supported by the unit inlet or outlet connections.
- 7) M = Motor location, M1 = Large Motor Location, M2 = Small Motor Location

MODEL NO.	APPROX. SHIPPING WEIGHT	APPROX. OPERATING WEIGHT	HEAVIEST SECTION (COIL)	F	H
VCA-174A	8170	11960	5770	2'-9 1/4"	12'-9 1/2"
VCA-192A	8200	11990	5770	2'-9 1/4"	12'-9 1/2"
VCA-206A	8210	12000	5770	2'-9 1/4"	12'-9 1/2"
VCA-227A	8280	12070	5770	2'-9 1/4"	12'-9 1/2"
VCA-195A	9310	13160	6910	3'-6 1/2"	13'-6 3/4"
VCA-215A	9340	13190	6910	3'-6 1/2"	13'-6 3/4"
VCA-235A	9350	13200	6910	3'-6 1/2"	13'-6 3/4"
VCA-259A	9420	13270	6910	3'-6 1/2"	13'-6 3/4"

ORDER NO: _____

DATE: _____



Baltimore Aircoil

VCA Unit Print
6'x12'

DRAWING NUMBER: _____