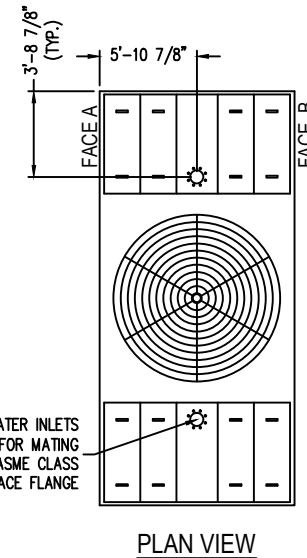


Notes

- 1) Drawings are not to scale. All dimensions are in feet and inches. Weights are in pounds and include options and accessories.
- 2) Unless otherwise indicated, connections 3" and smaller are MPT. Connections 4" and larger are grooved to suit a mechanical coupling and beveled for welding.
- 3) Field piping should be fabricated at time of installation. Pre-fabrication of pipe work is not recommended.
- 4) Do not support piping from unit connections. All necessary piping supports to be supplied by others.
- 5) For weight loadings and support requirements, refer to the suggested unit support drawing.
- 6) The area above the fan discharge must be unobstructed.
- 7) Due to height limitations on truck shipments, some items shown may ship loose for field installation.
- 8) Outlet connections are sized for pump suction application at the design flow rate. They are based on the maximum flow rate through the strainer with basin water at standard operating level.

MODEL NUMBER	SHIPPING WEIGHT	OPERATING WEIGHT	HEAVIEST SECTION WEIGHT
XES3E-1222-10K	14,908	33,081	8,582
XES3E-1222-10L	14,978	33,151	8,652
XES3E-1222-10M	14,998	33,171	8,672
XES3E-1222-10N	15,138	33,311	8,812
XES3E-1222-10O	15,188	33,361	8,862
S3E-1222-10P	15,328	33,501	9,002
S3E-1222-10Q	15,488	33,661	9,162
S3E-1222-10R	15,498	33,671	9,172
S3E-1222-10S	16,458	34,631	10,132



ORDER NO:

DATE: **7/25/2013**



**BALTIMORE AIRCOIL COMPANY**

**3000E Unit Print  
Two Piece Units**

DRAWING NUMBER:  
**UP-1222-10**