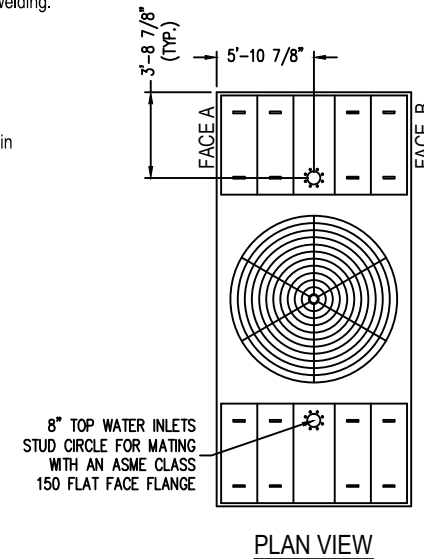


Notes

- 1) Drawings are not to scale. All dimensions are in feet and inches. Weights are in pounds and include options and accessories.
- 2) Unless otherwise indicated, connections 3" and smaller are MPT. Connections 4" and larger are grooved to suit a mechanical coupling and beveled for welding.
- 3) Field piping should be fabricated at time of installation. Pre-fabrication of pipe work is not recommended.
- 4) Do not support piping from unit connections. All necessary piping supports to be supplied by others.
- 5) For weight loadings and support requirements, refer to the suggested unit support drawing.
- 6) The area above the fan discharge must be unobstructed.
- 7) Due to height limitations on truck shipments, some items shown may ship loose for field installation.
- 8) Outlet connections are sized for pump suction application at the design flow rate. They are based on the maximum flow rate through the strainer with basin water at standard operating level.

MODEL NUMBER	SHIPPING WEIGHT	OPERATING WEIGHT	HEAVIEST SECTION WEIGHT
XES3E-1222-13K	16,298	36,744	8,692
XES3E-1222-13L	16,368	36,814	8,762
XES3E-1222-13M	16,388	36,834	8,782
XES3E-1222-13N	16,528	36,974	8,922
XES3E-1222-13O	16,578	37,024	8,972
S3E-1222-13P	16,718	37,164	9,112
S3E-1222-13Q	16,778	37,224	9,172
S3E-1222-13R	16,988	37,434	9,382
S3E-1222-13S	17,068	37,514	9,462



ORDER NO:

DATE: **7/25/2013**



**BALTIMORE AIRCOIL COMPANY**

**3000E Unit Print  
Two Piece Units**

DRAWING NUMBER:  
**UP-1222-13**