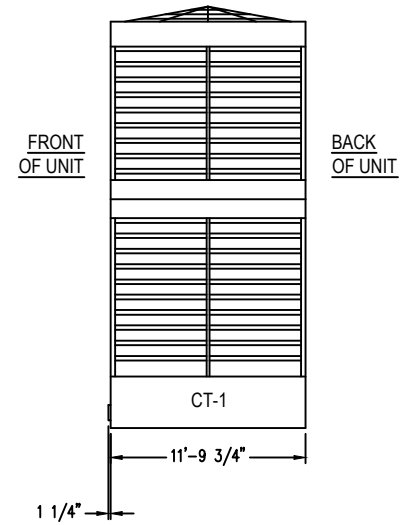


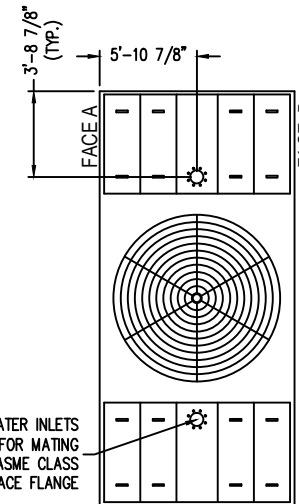
END ELEVATION (FACE A)



SIDE ELEVATION

Notes

- 1) Drawings are not to scale. All dimensions are in feet and inches. Weights are in pounds and include options and accessories.
- 2) Unless otherwise indicated, connections 3" and smaller are MPT. Connections 4" and larger are grooved to suit a mechanical coupling and beveled for welding.
- 3) Field piping should be fabricated at time of installation. Pre-fabrication of pipe work is not recommended.
- 4) Do not support piping from unit connections. All necessary piping supports to be supplied by others.
- 5) For weight loadings and support requirements, refer to the suggested unit support drawing.
- 6) The area above the fan discharge must be unobstructed.
- 7) Due to height limitations on truck shipments, some items shown may ship loose for field installation.
- 8) Outlet connections are sized for pump suction application at the design flow rate. They are based on the maximum flow rate through the strainer with basin water at standard operating level.



PLAN VIEW

MODEL NUMBER	SHIPPING WEIGHT	OPERATING WEIGHT	HEAVIEST SECTION WEIGHT
XES3E-1222-12K	15,834	35,822	8,692
XES3E-1222-12L	15,904	35,892	8,762
XES3E-1222-12M	15,924	35,912	8,782
XES3E-1222-12N	16,064	36,052	8,922
XES3E-1222-12O	16,114	36,102	8,972
S3E-1222-12P	16,254	36,242	9,112
S3E-1222-12Q	16,314	36,302	9,172
S3E-1222-12R	16,524	36,512	9,382
S3E-1222-12S	17,484	37,472	10,342

ORDER NO:

DATE: 7/25/2013



**BALTIMORE
AIRCOIL COMPANY**

**3000E Unit Print
Two Piece Units**

DRAWING NUMBER:
UP-1222-12