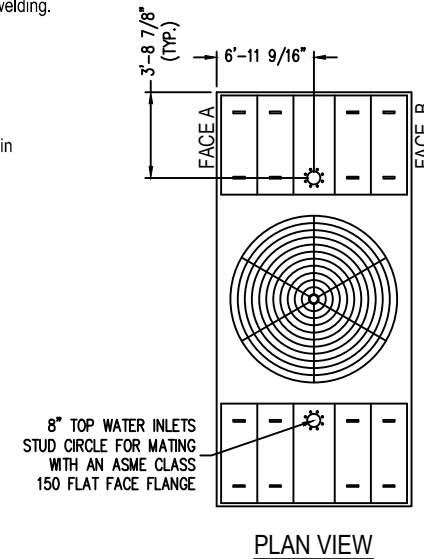


Notes

- 1) Drawings are not to scale. All dimensions are in feet and inches. Weights are in pounds and include options and accessories.
- 2) Unless otherwise indicated, connections 3" and smaller are MPT. Connections 4" and larger are grooved to suit a mechanical coupling and beveled for welding.
- 3) Field piping should be fabricated at time of installation. Pre-fabrication of pipe work is not recommended.
- 4) Do not support piping from unit connections. All necessary piping supports to be supplied by others.
- 5) For weight loadings and support requirements, refer to the suggested unit support drawing.
- 6) The area above the fan discharge must be unobstructed.
- 7) Due to height limitations on truck shipments, some items shown may ship loose for field installation.
- 8) Outlet connections are sized for pump suction application at the design flow rate. They are based on the maximum flow rate through the strainer with basin water at standard operating level.

MODEL NUMBER	SHIPPING WEIGHT	OPERATING WEIGHT	HEAVIEST SECTION WEIGHT
XES3E-1424-13L	21,616	45,443	11,484
XES3E-1424-13M	21,636	45,463	11,504
XES3E-1424-13N	21,776	45,603	11,644
XES3E-1424-13O	21,826	45,653	11,694
XES3E-1424-13P	21,966	45,793	11,834
S3E-1424-13Q	22,026	45,853	11,894
S3E-1424-13R	22,186	46,013	12,054
S3E-1424-13S	22,236	46,063	12,104
S3E-1424-13T	24,156	47,983	13,194



ORDER NO:

DATE: 7/25/2013



**BALTIMORE
AIRCOIL COMPANY**

**3000E Unit Print
Two Piece Units**

DRAWING NUMBER:
UP-1424-13