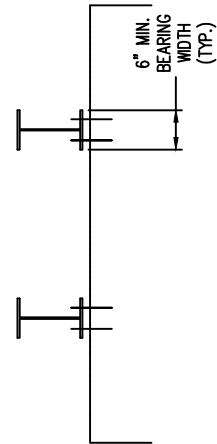
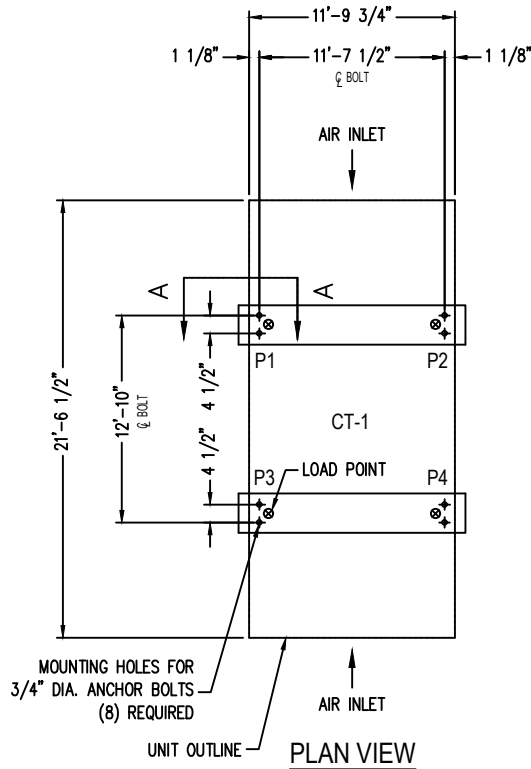


SECTION "A-A"



END ELEVATION



PLAN VIEW

MODEL NO.	SHIPPING WEIGHT	OPERATING WEIGHT	POINT "1"	POINT "2"	POINT "3"	POINT "4"
S5E-1222-14L	21940	40490	10123	10123	10123	10123
S5E-1222-14M	21940	40490	10123	10123	10123	10123
S5E-1222-14N	22080	40630	10158	10158	10158	10158
S5E-1222-14O	22130	40680	10170	10170	10170	10170
S5E-1222-14P	22270	40820	10205	10205	10205	10205
S5E-1222-14Q	22330	40880	10220	10220	10220	10220
S5E-1222-14R	22490	41040	10260	10260	10260	10260
S5E-1222-14S	22490	41040	10260	10260	10260	10260

Notes

- 1) Drawings are not to scale. All dimensions are in feet and inches. Weights are in pounds and include options and accessories.
- 2) Operating weight and weight loading are for units with water level in basin at overflow.
- 3) Unit support beams and anchor bolts to be designed and furnished by others.
- 4) Support beams must be flush and level at top.
- 5) Steel frame members perpendicular to the support beams and under the air inlet edges of unit must be at least 2" below the top of the support beams.

ORDER NO:

DATE:



**BALTIMORE
AIRCOIL COMPANY**

**5000E Unit Support
Standard Basins**

DRAWING NUMBER:

1222-14