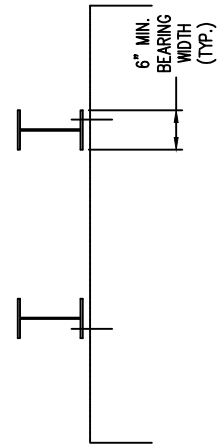
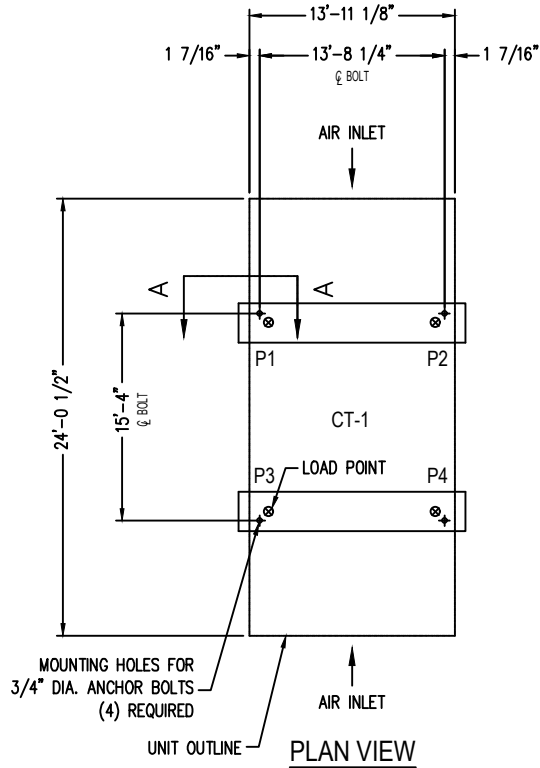


SECTION "A-A"



END ELEVATION



PLAN VIEW

Notes

- 1) Drawings are not to scale. All dimensions are in feet and inches. Weights are in pounds and include options and accessories.
- 2) Operating weight and weight loading are for units with water level in basin at overflow.
- 3) Unit support beams and anchor bolts to be designed and furnished by others.
- 4) Support beams must be flush and level at top.
- 5) Steel frame members perpendicular to the support beams and under the air inlet edges of unit must be at least 2" below the top of the support beams.

MODEL NO.	SHIPPING WEIGHT	OPERATING WEIGHT	POINT "1"	POINT "2"	POINT "3"	POINT "4"
S5E-1424-07L	19460	38270	9568	9568	9568	9568
S5E-1424-07M	19480	38290	9573	9573	9573	9573
S5E-1424-07N	19620	38430	9608	9608	9608	9608
S5E-1424-07O	19670	38480	9620	9620	9620	9620
S5E-1424-07P	19830	38640	9660	9660	9660	9660
S5E-1424-07Q	19840	38650	9663	9663	9663	9663
S5E-1424-07R	19850	38660	9665	9665	9665	9665

ORDER NO:

DATE:



BALTIMORE AIRCOIL COMPANY

**5000E Unit Support
Standard Basins**

DRAWING NUMBER:

1424-07