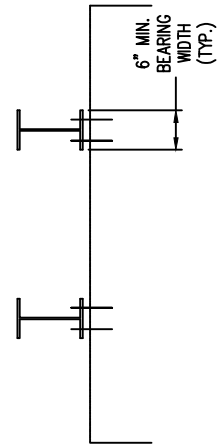
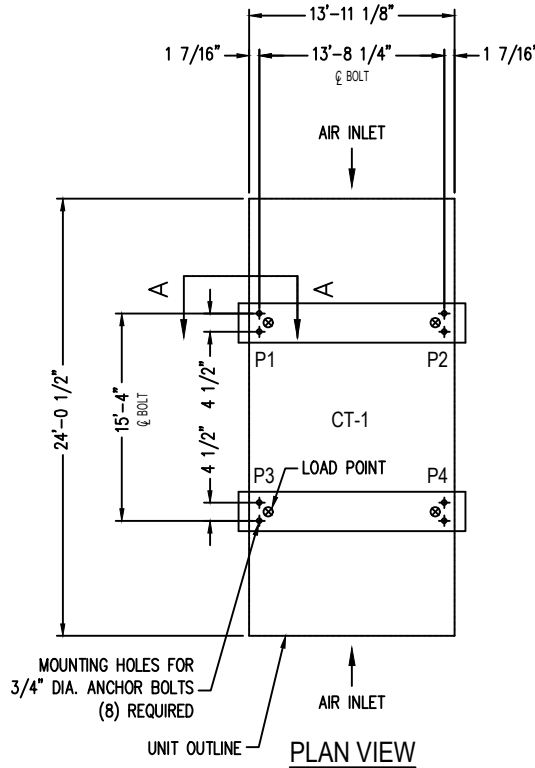


SECTION "A-A"



END ELEVATION



PLAN VIEW

MODEL NO.	SHIPPING WEIGHT	OPERATING WEIGHT	POINT "1"	POINT "2"	POINT "3"	POINT "4"
S5E-1424-14M	27980	51470	12868	12868	12868	12868
S5E-1424-14N	28120	51610	12903	12903	12903	12903
S5E-1424-14O	28170	51660	12915	12915	12915	12915
S5E-1424-14P	28310	51800	12950	12950	12950	12950
S5E-1424-14Q	28370	51860	12965	12965	12965	12965
S5E-1424-14R	28530	52020	13005	13005	13005	13005
S5E-1424-14S	28580	52070	13018	13018	13018	13018
S5E-1424-14T	28580	52070	13018	13018	13018	13018

Notes

- 1) Drawings are not to scale. All dimensions are in feet and inches. Weights are in pounds and include options and accessories.
- 2) Operating weight and weight loading are for units with water level in basin at overflow.
- 3) Unit support beams and anchor bolts to be designed and furnished by others.
- 4) Support beams must be flush and level at top.
- 5) Steel frame members perpendicular to the support beams and under the air inlet edges of unit must be at least 2" below the top of the support beams.

ORDER NO:

DATE:



**BALTIMORE
AIRCOIL COMPANY**

**5000E Unit Support
Standard Basins**

DRAWING NUMBER:

1424-14