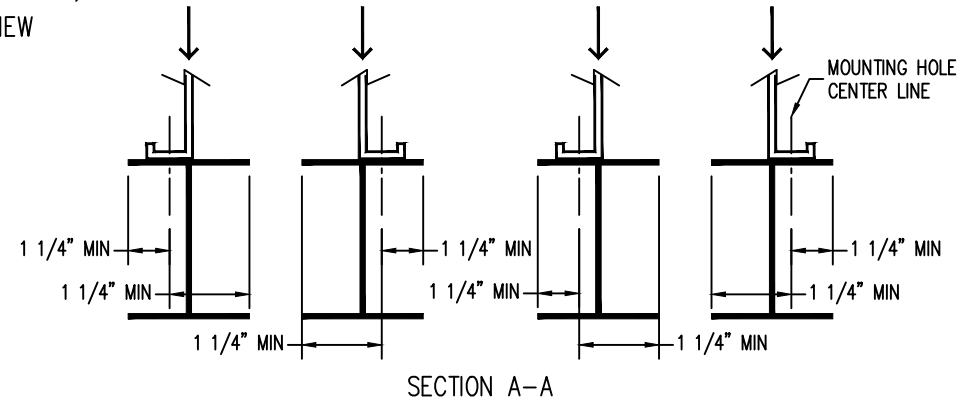
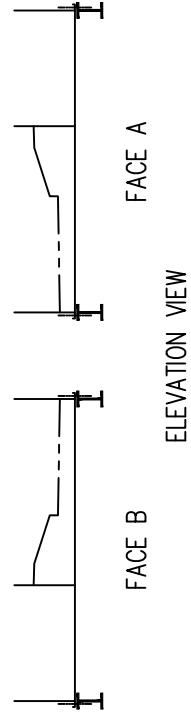
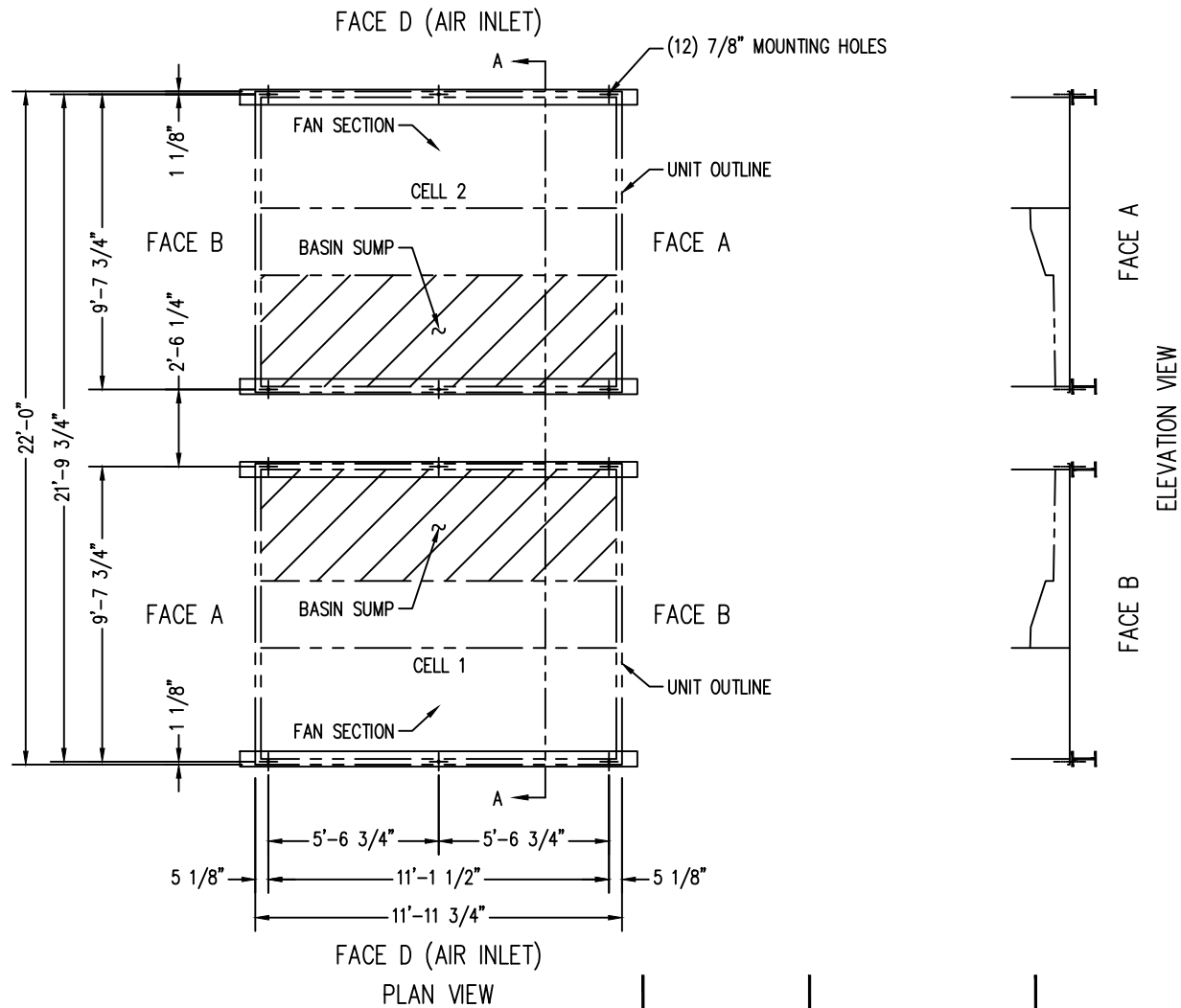


Notes

- 1) Drawings are not to scale.
- 2) All dimensions are in feet and inches. Weights are in pounds and include options and accessories.
- 3) Operating weight and weight loading are for units with water level in cold water basin at overflow.
- 4) Unit support beams and anchor bolts to be designed and furnished by others. Minimum dimensions shown in Section A-A are provided only to ensure proper support of unit.
- 5) Support beams must be flush and level at top.
- 6) Support beams are not limited to an I-beam shape.
- 7) Each beam should be designed, as a minimum, for 65% of the total unit operating weight applied as a uniformly distributed load.
- 8) If vibration isolators are used, they should be installed under the support beams and should never have direct contact with the unit.



MODEL NO.	APPROX. SHIPPING WEIGHT	APPROX. OPERATING WEIGHT
VRC-0470B-2012N-JA	25680	34360
VRC-0484B-2012N-HA	27220	36070
VRC-0533B-2012N-JA	27470	36320
VRC-0571B-2012N-KA	27570	36410
VRC-0609B-2012N-KA	31340	40360
VRC-0672B-2012N-LA	31990	41010
VRC-0615B-2012N-JA	32810	41980
VRC-0659B-2012N-KA	32900	42070
VRC-0727B-2012N-LA	33550	42720

ORDER NO:

DATE:



**BALTIMORE
AIRCOIL COMPANY**

**Vertex™ Evaporative Condenser
20x12 Two Cell Unit Support**

DRAWING NUMBER: