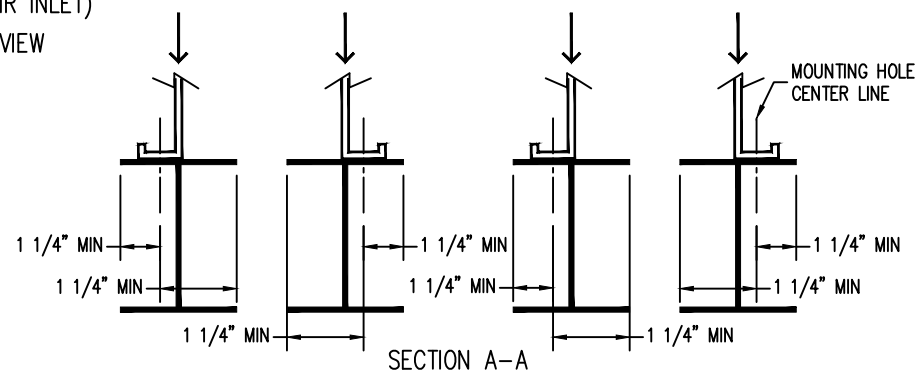
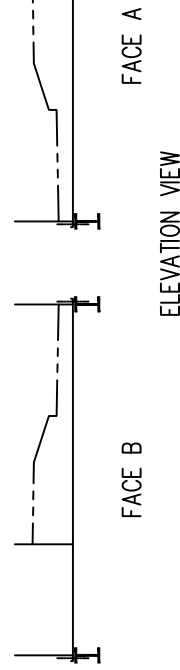
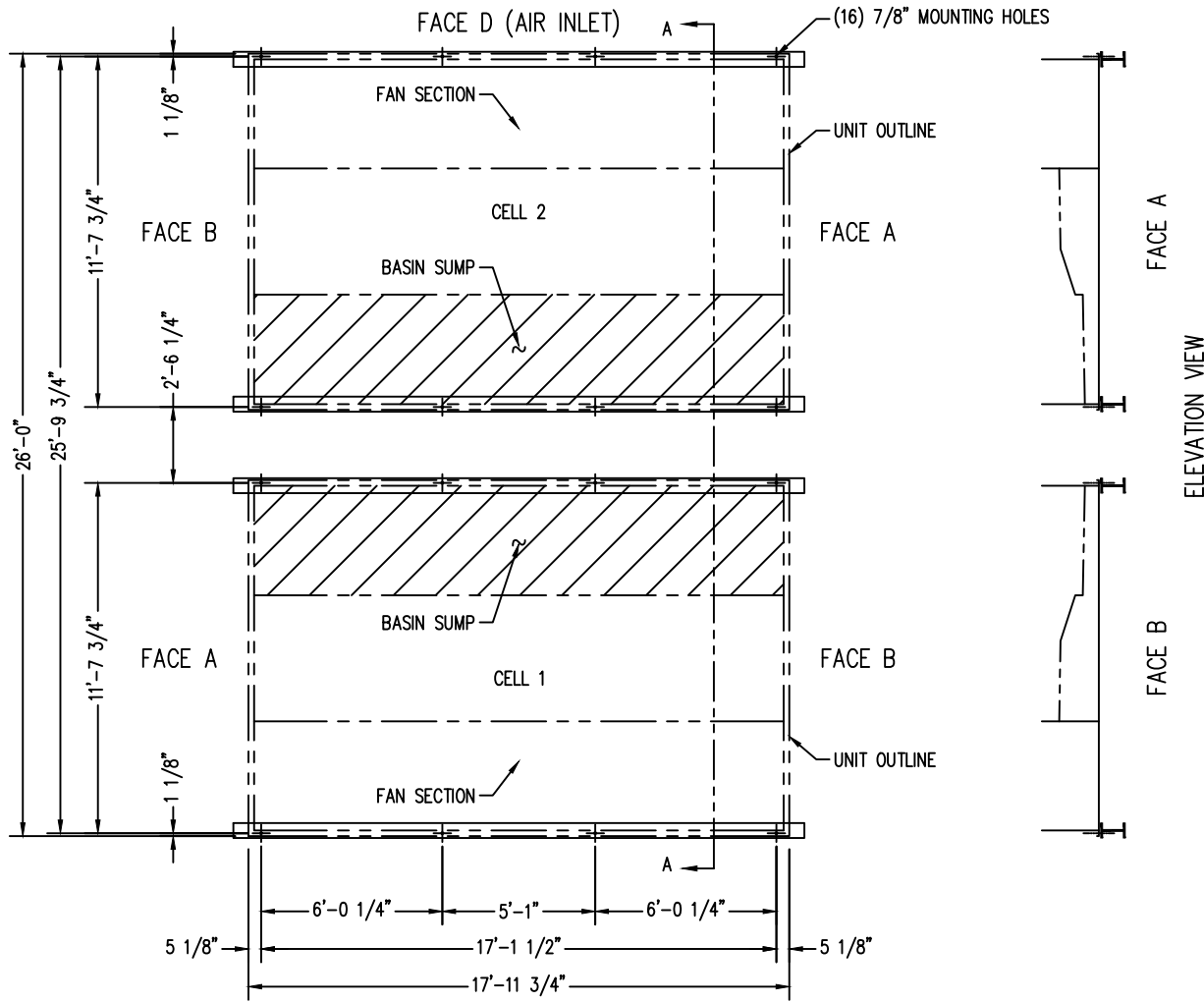


Notes

- 1) Drawings are not to scale.
- 2) All dimensions are in feet and inches. Weights are in pounds and include options and accessories.
- 3) Operating weight and weight loading are for units with water level in cold water basin at overflow.
- 4) Unit support beams and anchor bolts to be designed and furnished by others. Minimum dimensions shown in Section A-A are provided only to ensure proper support of unit.
- 5) Support beams must be flush and level at top.
- 6) Support beams are not limited to an I-beam shape.
- 7) Each beam should be designed, as a minimum, for 65% of the total unit operating weight applied as a uniformly distributed load.
- 8) If vibration isolators are used, they should be installed under the support beams and should never have direct contact with the unit.



MODEL NO.	APPROX. SHIPPING WEIGHT	APPROX. OPERATING WEIGHT
VRC-0661B-2418N-GA	39660	53730
VRC-0747B-2418N-HA	39650	53720
VRC-0825B-2418N-JA	40030	54100
VRC-0885B-2418N-KA	40170	54240
VRC-0912B-2418N-JA	43340	57730
VRC-0977B-2418N-KA	43480	57880
VRC-1065B-2418N-KA	48910	63650
VRC-1175B-2418N-LA	49890	64620
VRC-1260B-2418N-MA	50260	65000
VRC-1271B-2418N-LA	52790	67810
VRC-1359B-2418N-MA	53160	68180
VRC-1434B-2418N-NA	53400	68420

ORDER NO: \_\_\_\_\_

DATE: \_\_\_\_\_



**Vertex™ Evaporative Condenser  
24x18 Two Cell Unit Support**

DRAWING NUMBER: \_\_\_\_\_