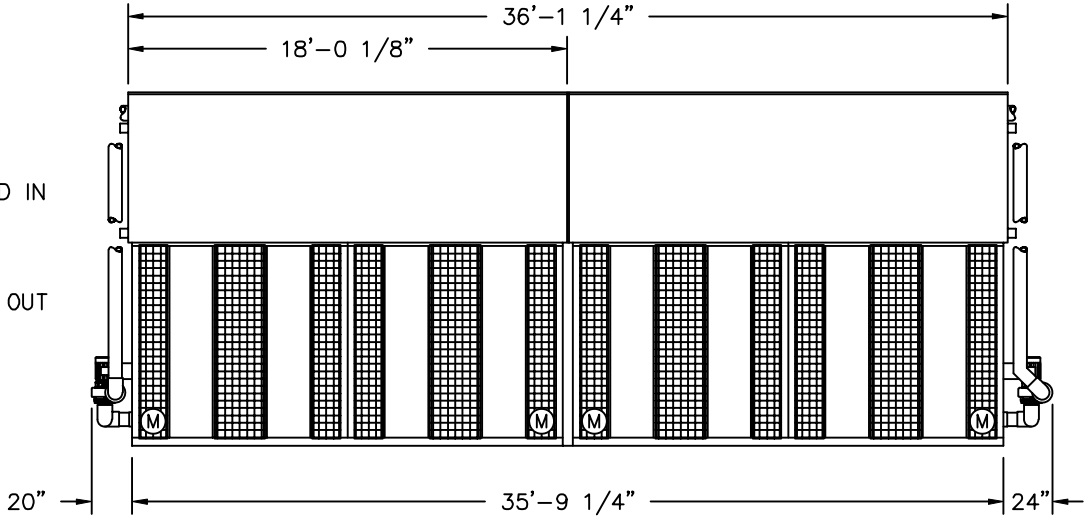
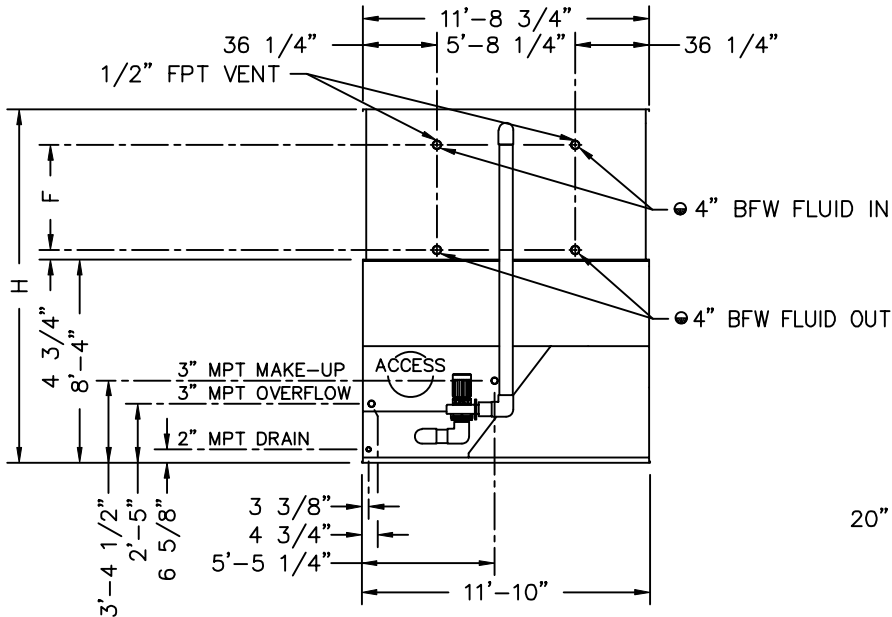


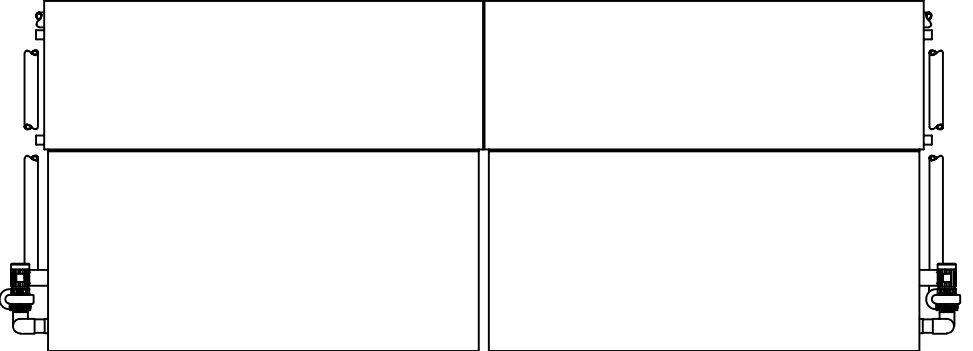
2000© Baltimore Aircoil Company. All Rights Reserved.



(M) FAN MOTOR LOCATION.
 † PAN IS HEAVIEST SECTION. ● BFW BEVELED FOR WELDING.

MODEL NO.	APPROX. SHIPPING WEIGHT	APPROX. OPERATING WEIGHT	HEAVIEST SECTION (COIL)	F	H
VF1-432-21	45960	79600	†18000	33 1/4"	12'-11 1/2"
VF1-432-31	52400	88320	18290	42 1/2"	13'-8 3/4"
VF1-432-41	59200	97320	21410	51 3/4"	14'-6"

- NOTES:
1. ALL DIMENSIONS ARE IN FEET AND INCHES. WEIGHTS ARE IN POUNDS.
 2. UNLESS OTHERWISE INDICATED, ALL CONNECTIONS 6 INCHES AND SMALLER ARE MPT AND CONNECTIONS 8 INCHES AND LARGER ARE BEVELED FOR WELDING.
 3. DIMENSIONS SHOWING LOCATION OF COIL CONNECTIONS ARE APPROXIMATE AND SHOULD NOT BE USED FOR PREFABRICATION OF CONNECTING PIPING.
 4. SPRAY WATER, OVERFLOW, DRAIN AND COIL CONNECTIONS ARE PROVIDED ON BOTH ENDS OF THE UNIT. ONLY ONE MAKE-UP CONNECTION IS FURNISHED, ON THE END INDICATED.
 5. FOR SUPPORT REQUIREMENTS, REFER TO THE SUGGESTED STEEL SUPPORT DRAWING.



B.A.C.
 ORDER NO:
 DATE:



RIGHT HAND UNIT
 END OUTLET WITH PUMP
 DRAWING NUMBER:
 BAC-11556A A