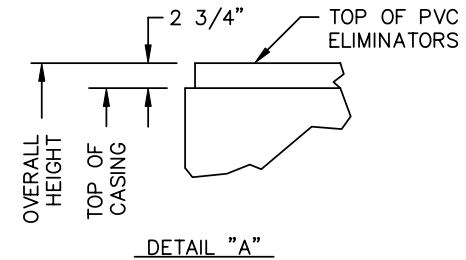


● BFW BEVELED FOR WELDING


MODEL NO.	APPROX. SHIPPING WEIGHT (LBS)	APPROX. OPERATING WEIGHT (LBS)	F	TOP OF CASING	OVERALL HEIGHT
VFL-024-12H	3120	4610	1'-9 3/4"	6'-1"	6'-3 3/4"
VFL-024-22H	3510	5130	2'-6 1/4"	6'-7 1/4"	6'-7 1/4"
VFL-024-22J	3510	5130	2'-6 1/4"	6'-7 1/4"	6'-10"
VFL-024-32H	4000	5750	3'-2 3/4"	7'-3 3/4"	7'-3 3/4"
VFL-024-32J	4000	5750	3'-2 3/4"	7'-3 3/4"	7'-6 1/2"



TYPICAL ONLY WHERE OVERALL HEIGHT EXCEEDS TOP OF CASING

NOTES:

1. ALL DIMENSIONS ARE IN FEET AND INCHES. WEIGHTS ARE IN POUNDS.
2. UNLESS OTHERWISE INDICATED, ALL CONNECTIONS 6 INCHES AND SMALLER ARE MPT AND CONNECTIONS 8 INCHES AND LARGER ARE BEVELED FOR WELDING.
3. DIMENSIONS SHOWING LOCATION OF COIL CONNECTIONS ARE APPROXIMATE AND SHOULD NOT BE USED FOR PREFABRICATION OF CONNECTING PIPING.
4. FOR SUPPORT REQUIREMENTS, REFER TO THE SUGGESTED STEEL SUPPORT DRAWING.

B.A.C. ORDER NO.	 BALTIMORE AIRCOIL COMPANY	RIGHT HAND UNIT STANDARD OUTLET WITH PUMP	
DATE		DWG NO. BAC-15863A	A