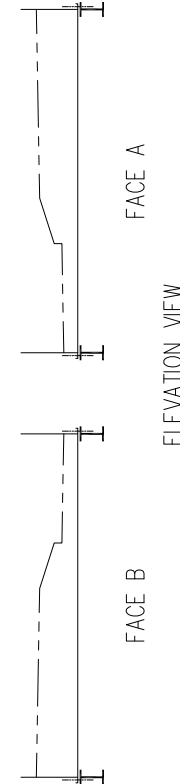
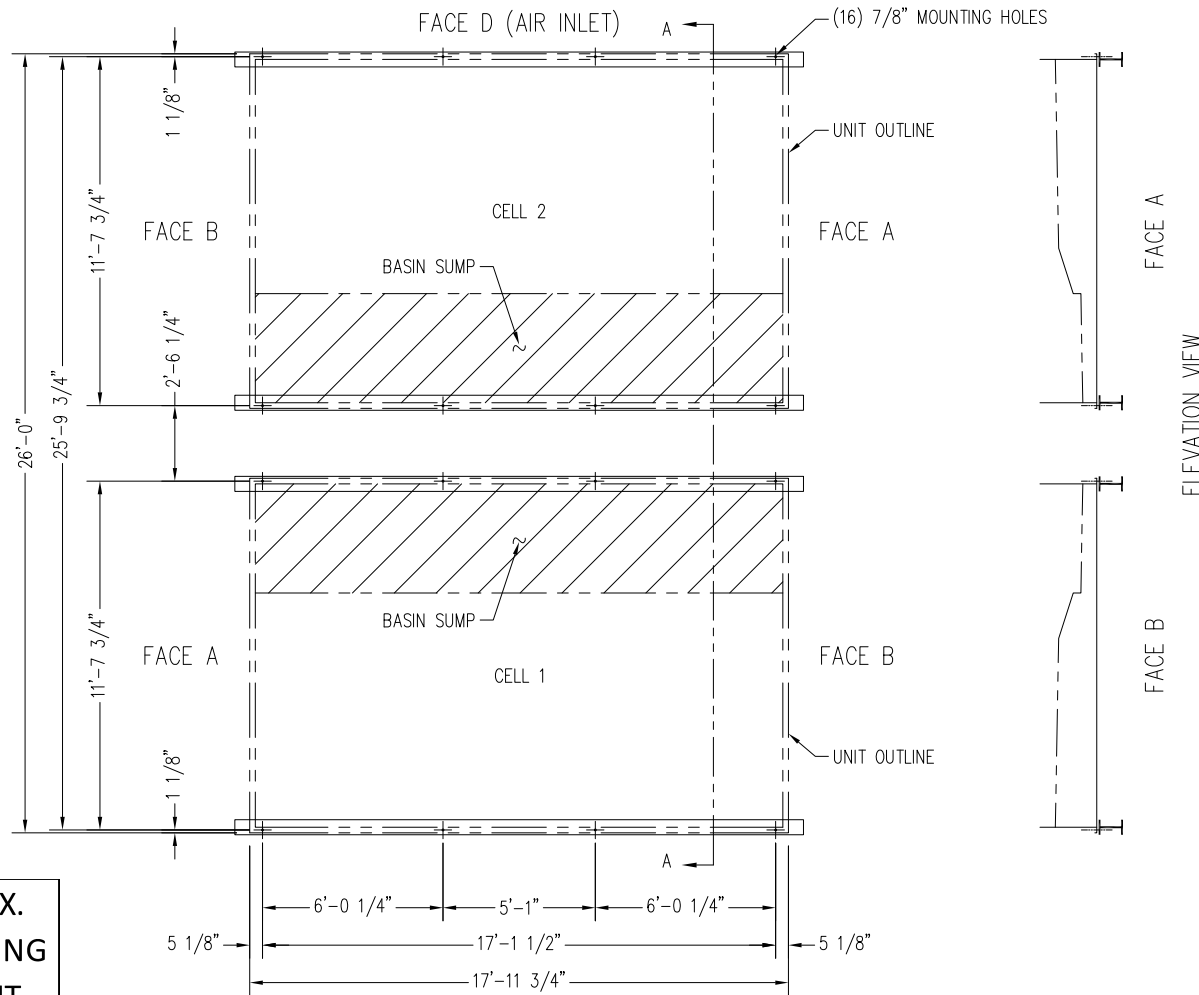
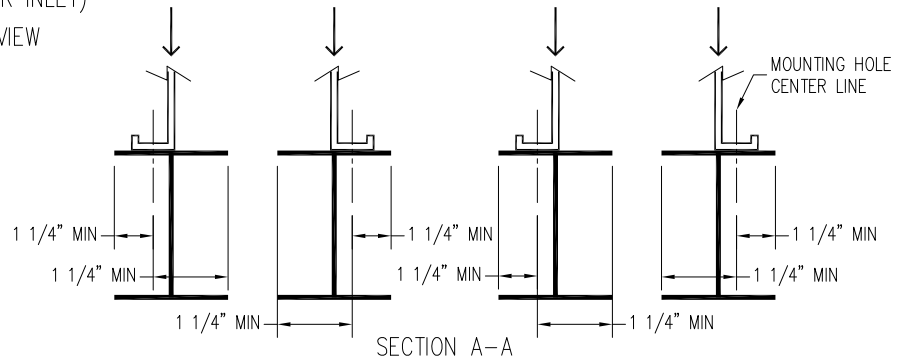


Notes

- 1) Drawings are not to scale.
- 2) All dimensions are in feet and inches. Weights are in pounds and include options and accessories.
- 3) Operating weight and weight loading are for units with water level in cold water basin at overflow.
- 4) Unit support beams and anchor bolts to be designed and furnished by others. Minimum dimensions shown in Section A-A are provided only to ensure proper support of unit.
- 5) Support beams must be flush and level at top.
- 6) Support beams are not limited to an I-beam shape.
- 7) Each beam should be designed, as a minimum, for 65% of the total unit operating weight applied as a uniformly distributed load.
- 8) If vibration isolators are used, they should be installed under the support beams and should never have direct contact with the unit.



FACE D (AIR INLET)
PLAN VIEW



MODEL NUMBER	APPROX. SHIPPING WEIGHT	APPROX. OPERATING WEIGHT
VRC-0934B-2418N-HB	37,550	51,790
VRC-1020B-2418N-HB	40,860	55,420
VRC-1032B-2418N-JB	37,550	51,790
VRC-1111B-2418N-HB	46,290	61,190
VRC-1127B-2418N-JB	40,860	55,420
VRC-1198B-2418N-HB	49,200	64,380
VRC-1227B-2418N-JB	46,290	61,190
VRC-1324B-2418N-JB	49,200	64,380

ORDER NO: _____

DATE: _____



BALTIMORE AIRCOIL COMPANY

**Vertex™ Evaporative Condenser
24x18 Two Cell Unit Support**

DRAWING NUMBER: _____