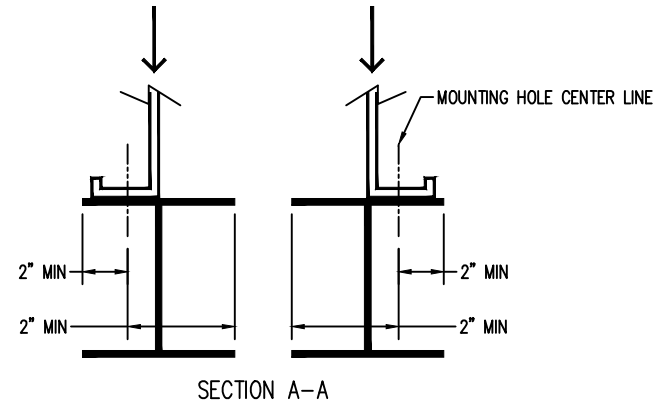


- Notes
- 1) Supporting steelwork and anchor bolts to be designed and furnished by others.
  - 2) All supporting steel must be flush and level at top.
  - 3) Beams should be selected in accordance with accepted structural practice.
  - 4) Supporting steel will be greater than or equal to the length of the unit's base.
  - 5) Unit may not be point supported. Support must extend the entirety of unit length.
  - 6) Each beam should be designed, as a minimum, for 65% of the total unit operating weight applied as a uniformly distributed load.
  - 7) Weights include all of the options and accessories.



Model Number	Shipping Weight	Operating Weight
TRF-1038N-C60F*77E	20768	25056
TRF-1038N-C80F*77E	22597	26026

QUOTE NO:

DATE: **7/9/2024 11:41:26 AM Revision=0**



**TrilliumSeries™ Adiabatic Cooler  
Eighteen Fan Unit Support**

DRAWING NUMBER: