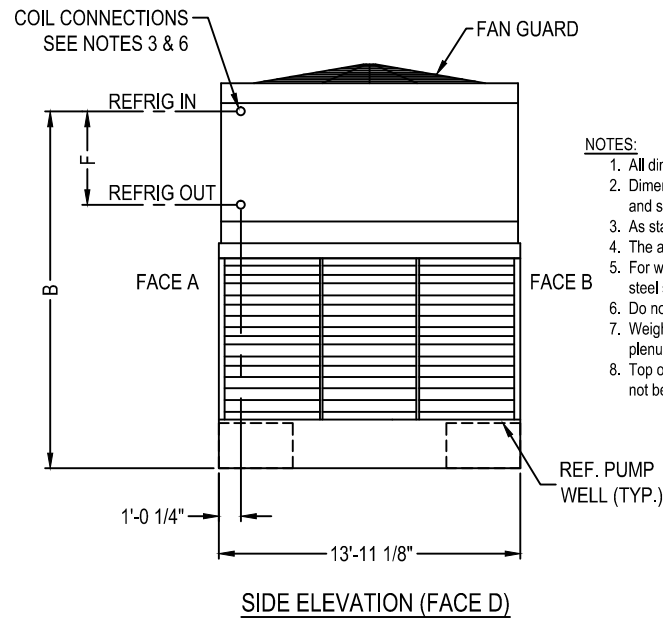
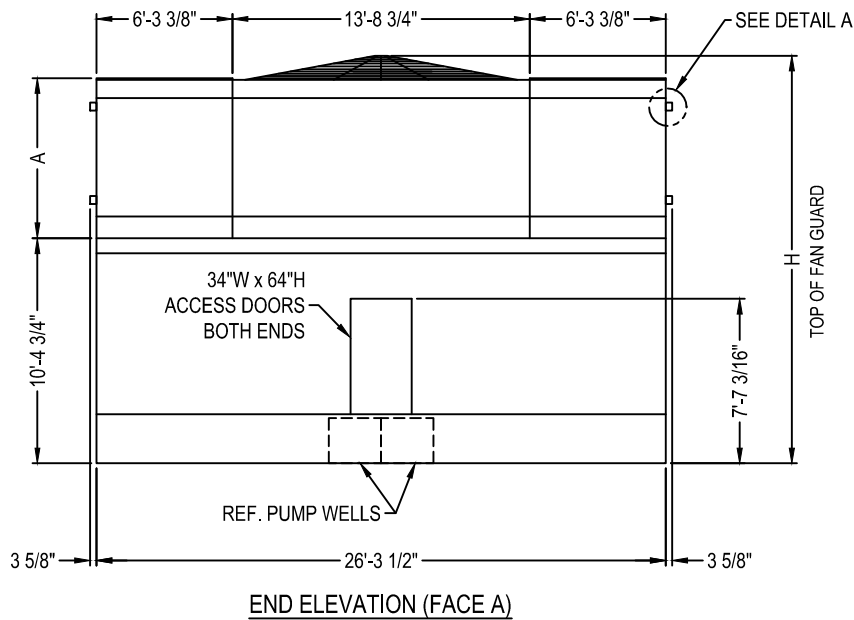
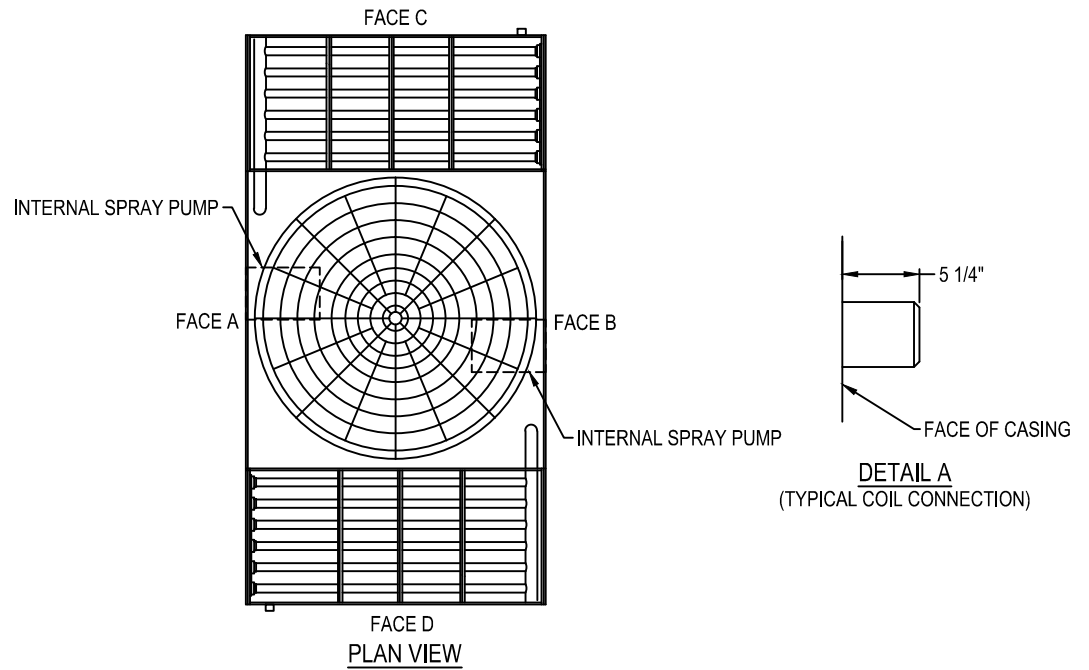


2014© Baltimore Aircoil Company. All Rights Reserved.

Model Number	Operating Weight	SHIPPING WEIGHT (See Note 7)				F	H	A	B
		Total	Lower Section	Plenum Section	Coil Section				
CXVT-712-1426-20	69079	39107	14610	6503	8997	3'-7"	19'-1"	7'-4 3/4"	16'-8 1/4"
CXVT-741-1426-25	69079	39107	14610	6503	8997	3'-7"	19'-1"	7'-4 3/4"	16'-8 1/4"
CXVT-766-1426-30	69079	39107	14610	6503	8997	3'-7"	19'-1"	7'-4 3/4"	16'-8 1/4"
CXVT-807-1426-40	69079	39107	14610	6503	8997	3'-7"	19'-1"	7'-4 3/4"	16'-8 1/4"
CXVT-844-1426-50	69079	39107	14610	6503	8997	3'-7"	19'-1"	7'-4 3/4"	16'-8 1/4"
CXVT-894-1426-50	72724	42385	14610	6503	10636	4'-4"	19'-1"	7'-4 3/4"	16'-8 1/4"
CXVT-933-1426-50	74137	43798	14610	6503	11342	3'-10"	19'-1"	7'-4 3/4"	16'-7 1/4"
CXVT-965-1426-60	74137	43798	14610	6503	11342	3'-10"	19'-7"	7'-4 3/4"	16'-7 1/4"
CXVT-1005-1426-75	74137	43798	14610	6503	11342	3'-10"	19'-7"	7'-4 3/4"	16'-7 1/4"
CXVT-1057-1426-75	86062	54230	14630	6600	16500	6'-1"	21'-3"	9'-1"	18'-2 1/2"
XECXVT629-1426-10	69079	39107	14610	6503	8997	3'-7"	19'-1"	7'-4 3/4"	16'-8 1/4"
XECXVT698-1426-10	74137	43798	14610	6503	11342	3'-10"	19'-1"	7'-4 3/4"	16'-7 1/4"
XECXVT734-1426-10	86062	54230	14630	6600	16500	6'-1"	20'-9"	9'-1"	18'-2 1/2"
XECXVT790-1426-15	86062	54230	14630	6600	16500	6'-1"	20'-9"	9'-1"	18'-2 1/2"
XECXVT832-1426-20	86062	54230	14630	6600	16500	6'-1"	20'-9"	9'-1"	18'-2 1/2"
XECXVT866-1426-25	86062	54230	14630	6600	16500	6'-1"	20'-9"	9'-1"	18'-2 1/2"
XECXVT895-1426-30	86062	54230	14630	6600	16500	6'-1"	20'-9"	9'-1"	18'-2 1/2"
XECXVT942-1426-40	86062	54230	14630	6600	16500	6'-1"	20'-9"	9'-1"	18'-2 1/2"



- NOTES:
1. All dimensions are in feet and inches. Weights are in pounds.
 2. Dimensions showing location of coil connections are approximate and should not be used for prefabrication of connecting piping.
 3. As standard, coil connections are beveled for welding.
 4. The area above the discharge of the fan must be unobstructed.
 5. For weight loading and support requirements refer to the suggested steel support drawing.
 6. Do not support piping from unit.
 7. Weights shown for each section. Each cell consists of one lower, one plenum, and two coil sections.
 8. Top of Fan Guard dimension may include cowl extension which may not be shown on print.

ORDER NO:

DATE:



**BALTIMORE
AIRCOIL COMPANY**

**CXVT Evaporative Condenser Tabulated Unit Print
Single Side Connection**

DRAWING NUMBER:
CXVT-1426-TUP

Z