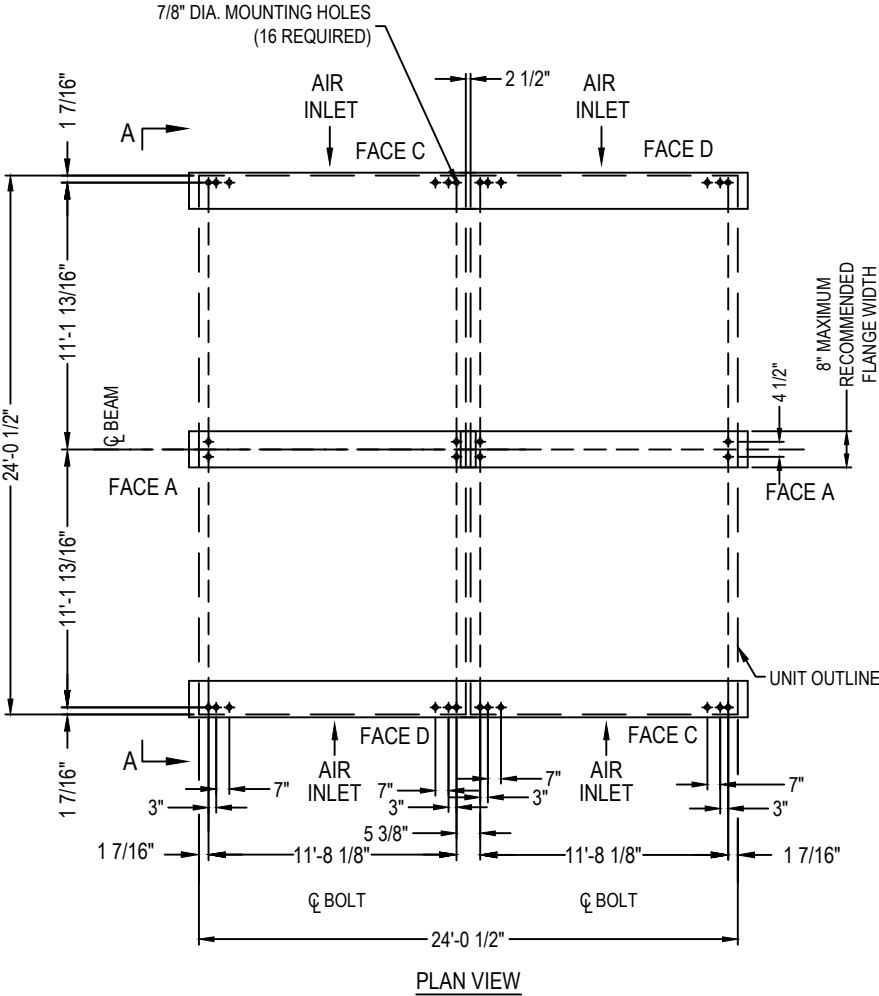
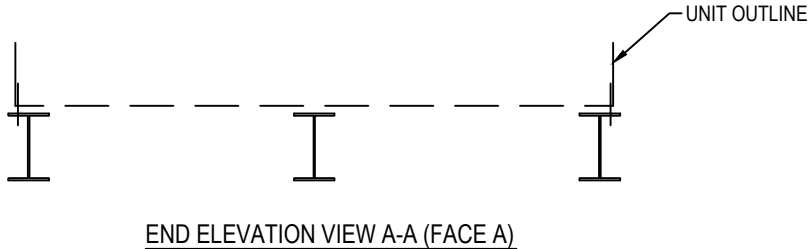


2014© Baltimore Aircoil Company. All Rights Reserved.

Model Number	Shipping Weight	Operating Weight
CXVT-1234-2424-30	75042	124570
CXVT-1300-2424-40	75042	124570
CXVT-1352-2424-50	75042	124570
CXVT-1400-2424-80	69498	118416
CXVT-1462-2424-100	69498	118416
CXVT-1508-2424-120	69498	118416
CXVT-1556-2424-100	75042	124570
CXVT-1626-2424-100	77558	127088
CXVT-1686-2424-120	77558	127088
CXVT-1774-2424-120	95690	147778
XECXVT1080-2424-20	69498	118416
XECXVT1210-2424-20	77558	127088
XECXVT1272-2424-20	95690	147778
XECXVT1368-2424-30	95690	147778
XECXVT1442-2424-40	95690	147778
XECXVT1500-2424-50	95690	147778
XECXVT1550-2424-60	95690	147778

NOTES:

- Operating weights are for units with water level in basin at overflow.
- Supporting steelwork and anchor bolts to be designed and furnished by others.
- All supporting steel must be level at top.
- Beams should be selected in accordance with accepted structural practice.
Minimum bearing width shall be 6". Maximum deflection of beam under unit to be 1/360 of span, not to exceed 1/2 inch.
- Weights shown are for standard unit. Some accessories may require weight adds. See respective accessory submittal drawing for weight adds.



[ANCHORAGE PER ZONE 2B PER UBC 97/30 PSF]

ORDER NO:
DATE:



CXVT Evaporative Condenser Tabulated Steel Support
Steel Support - Plan A Zone 2B
 DRAWING NUMBER:
CXVT-2424-TSS