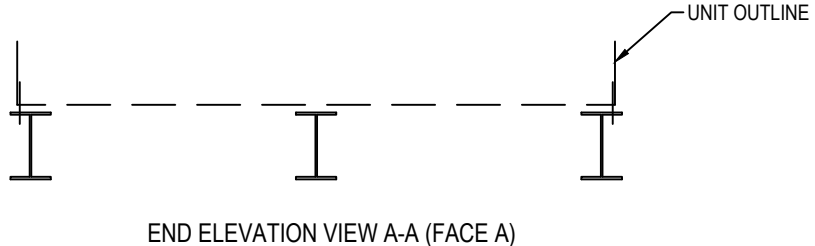
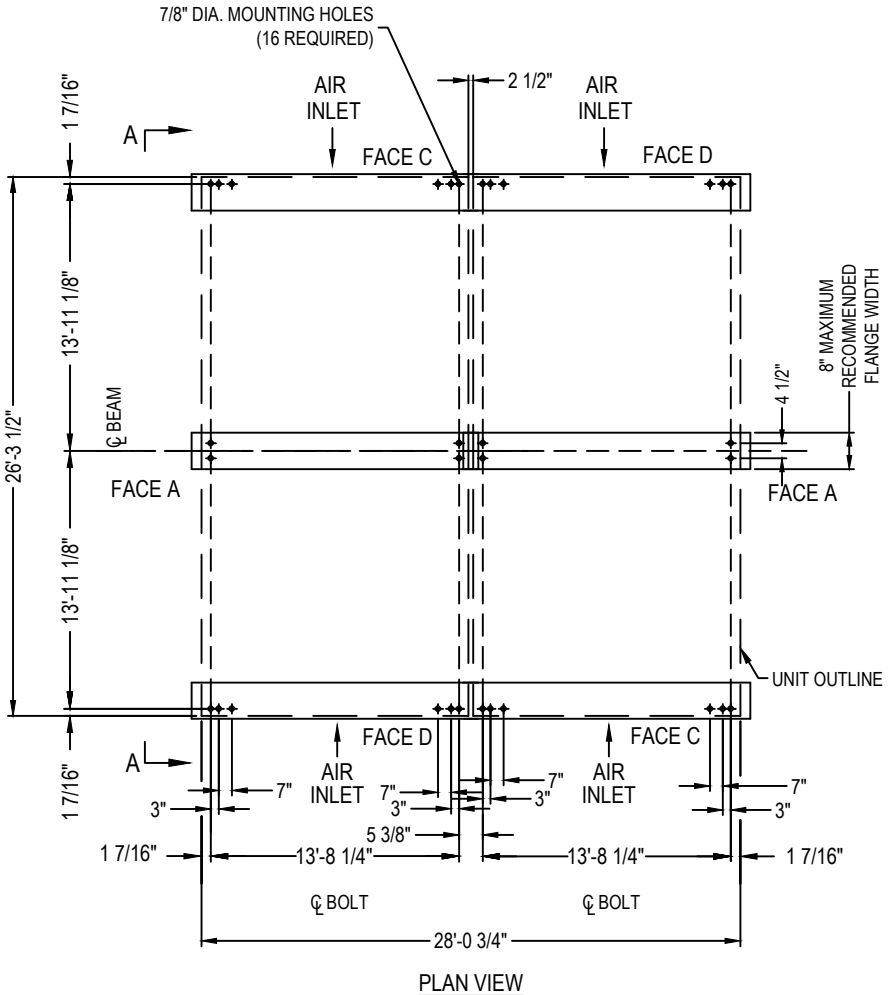


2014© Baltimore Aircoil Company. All Rights Reserved.

Model Number	Shipping Weight	Operating Weight
CXVT-1424-2826-40	78214	138158
CXVT-1482-2826-50	78214	138158
CXVT-1532-2826-60	78214	138158
CXVT-1614-2826-80	78214	138158
CXVT-1688-2826-100	78214	138158
CXVT-1788-2826-100	84770	145448
CXVT-1866-2826-100	87596	148274
CXVT-1930-2826-120	87596	148274
CXVT-2010-2826-150	87596	148274
CXVT-2114-2826-150	108460	172124
XECXVT1258-2826-20	78214	138158
XECXVT1396-2826-20	87596	148274
XECXVT1468-2826-20	108460	172124
XECXVT1580-2826-30	108460	172124
XECXVT1664-2826-40	108460	172124
XECXVT1732-2826-50	108460	172124
XECXVT1790-2826-60	108460	172124
XECXVT1884-2826-80	108460	172124

NOTES:

- Operating weights are for units with water level in basin at overflow.
- Supporting steelwork and anchor bolts to be designed and furnished by others.
- All supporting steel must be level at top.
- Beams should be selected in accordance with accepted structural practice.
Minimum bearing width shall be 6". Maximum deflection of beam under unit to be 1/360 of span, not to exceed 1/2 inch.
- Weights shown are for standard unit. Some accessories may require weight adds. See respective accessory submittal drawing for weight adds.



END ELEVATION VIEW A-A (FACE A)

[ANCHORAGE PER ZONE 2B PER UBC 97/30 PSF]

ORDER NO:
DATE:



CXVT Evaporative Condenser Tabulated Steel Support
Steel Support - Plan A Zone 2B
 DRAWING NUMBER:
CXVT-2826-TSS