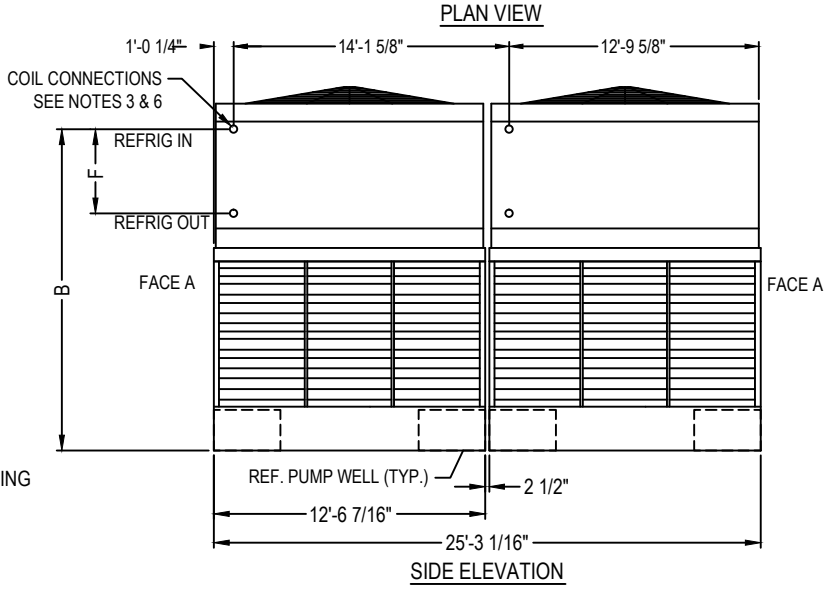
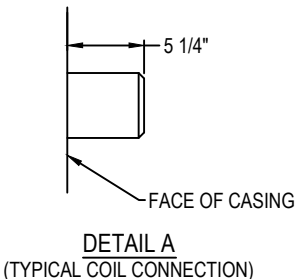
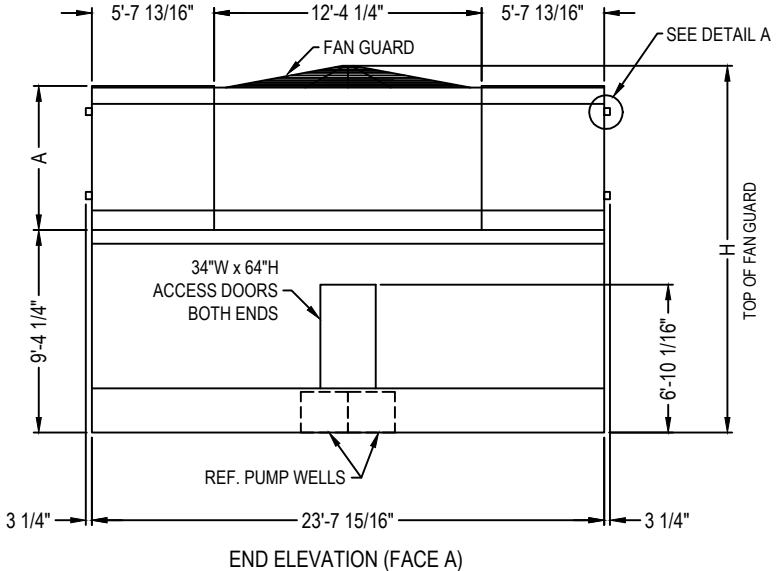
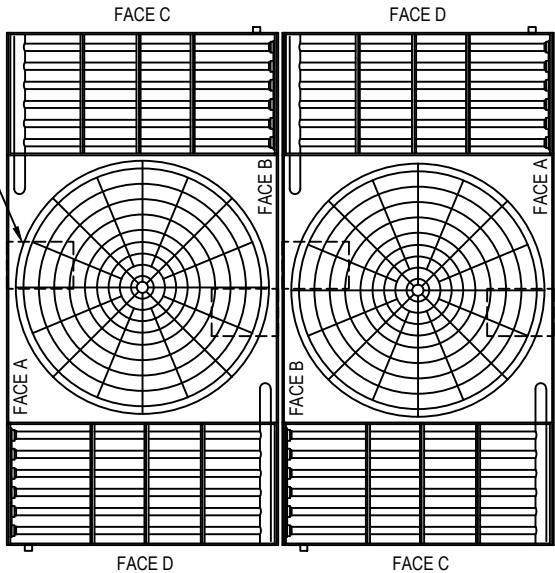


2014© Baltimore Aircoil Company. All Rights Reserved.

Model Number	Operating Weight	SHIPPING WEIGHT (See Note 7)				F	H	A	B
		Total	Lower Section	Plenum Section	Coil Section				
CXVT-1424-2826-40	138158	78214	14610	6503	8997	3'-7"	19'-1"	7'-4 3/4"	16'-8 1/4"
CXVT-1482-2826-50	138158	78214	14610	6503	8997	3'-7"	19'-1"	7'-4 3/4"	16'-8 1/4"
CXVT-1532-2826-60	138158	78214	14610	6503	8997	3'-7"	19'-1"	7'-4 3/4"	16'-8 1/4"
CXVT-1614-2826-80	138158	78214	14610	6503	8997	3'-7"	19'-1"	7'-4 3/4"	16'-8 1/4"
CXVT-1688-2826-100	138158	78214	14610	6503	8997	3'-7"	19'-1"	7'-4 3/4"	16'-8 1/4"
CXVT-1788-2826-100	145448	84770	14610	6503	10636	4'-4"	19'-1"	7'-4 3/4"	16'-8 1/4"
CXVT-1866-2826-100	148274	87596	14610	6503	11342	3'-10"	19'-1"	7'-4 3/4"	16'-7 1/4"
CXVT-1930-2826-120	148274	87596	14610	6503	11342	3'-10"	19'-7"	7'-4 3/4"	16'-7 1/4"
CXVT-2010-2826-150	148274	87596	14610	6503	11342	3'-10"	19'-7"	7'-4 3/4"	16'-7 1/4"
CXVT-2114-2826-150	172124	108460	14630	6600	16500	6'-1"	21'-3"	9'-1"	18'-2 1/2"
XECKVT1258-2826-20	138158	78214	14610	6503	8997	3'-7"	19'-1"	7'-4 3/4"	16'-8 1/4"
XECKVT1396-2826-20	148274	87596	14610	6503	11342	3'-10"	19'-1"	7'-4 3/4"	16'-7 1/4"
XECKVT1468-2826-20	172124	108460	14630	6600	16500	6'-1"	20'-9"	9'-1"	18'-2 1/2"
XECKVT1580-2826-30	172124	108460	14630	6600	16500	6'-1"	20'-9"	9'-1"	18'-2 1/2"
XECKVT1664-2826-40	172124	108460	14630	6600	16500	6'-1"	20'-9"	9'-1"	18'-2 1/2"
XECKVT1732-2826-50	172124	108460	14630	6600	16500	6'-1"	20'-9"	9'-1"	18'-2 1/2"
XECKVT1790-2826-60	172124	108460	14630	6600	16500	6'-1"	20'-9"	9'-1"	18'-2 1/2"
XECKVT1884-2826-80	172124	108460	14630	6600	16500	6'-1"	20'-9"	9'-1"	18'-2 1/2"

- NOTES:
1. All dimensions are in feet and inches. Weights are in pounds.
  2. Dimensions showing location of coil connections are approximate and should not be used for prefabrication of connecting piping.
  3. As standard, coil connections are beveled for welding.
  4. The area above the discharge of the fan must be unobstructed.
  5. For weight loading and support requirements refer to the suggested steel support drawing.
  6. Do not support piping from unit.
  7. Weights shown for each section. Each model consists of two lower, two plenum, and four coil sections.



ORDER NO:  
DATE:



**CXVT Evaporative Condenser Tabulated Unit Print**  
**Single Side Connection**  
DRAWING NUMBER:  
**CXVT-2826-TUP**