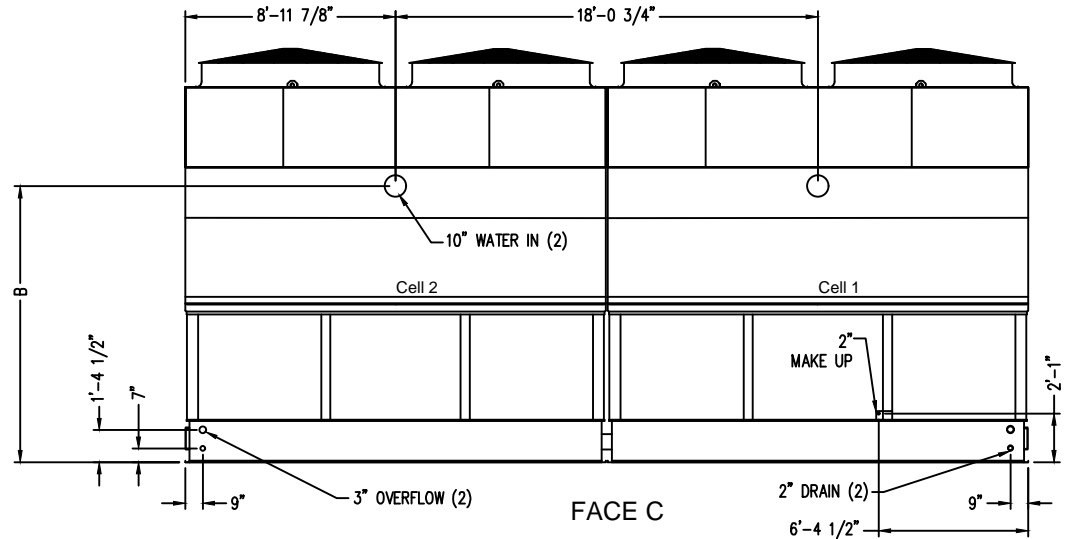
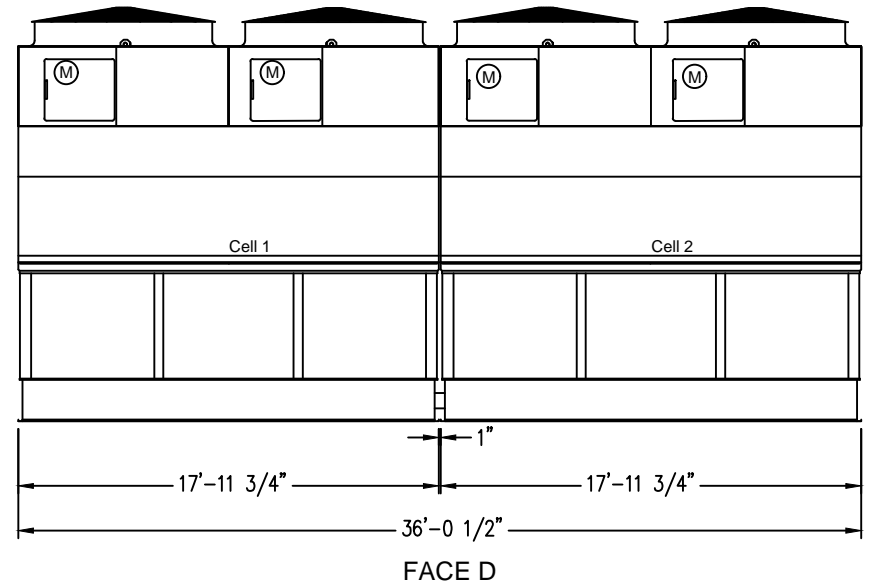
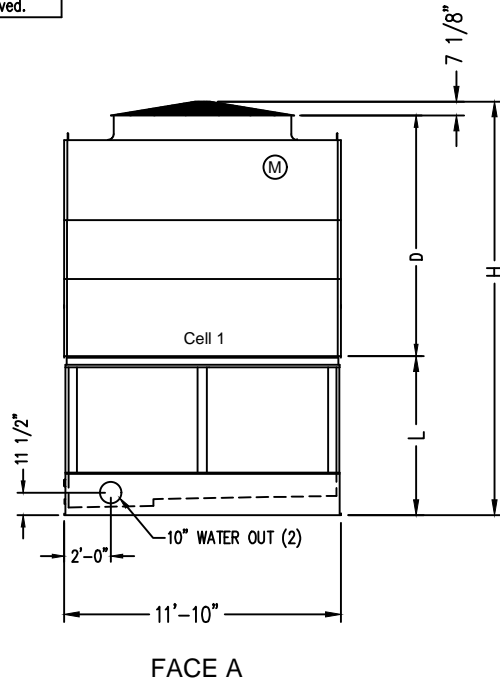


Notes

- 1) Unless otherwise indicated, connections 3" and smaller are NPT. Connections 4" and larger are grooved to suit a mechanical coupling and beveled for welding.
- 2) All dimensions are in feet and inches. Weights are in pounds and include options and accessories.
- 3) For weight loadings and support requirements, refer to the suggested steel support drawing.
- 4) The area above the fan discharge must be unobstructed.
- 5) Piping must not be supported by the tower inlet or outlet connections.
- 6) Unit weights include selected accessories.
- 7) M = Motor location.
- 8) Heaviest section is a cell's mechanical section mounted to fill casing section.



| Model Number | Shipping Weight | Operating Weight | Heaviest Section | "H" | "B" | "D" | "L" |
|---------------|-----------------|------------------|------------------|-------------|-------------|------------|------------|
| PT2-1218A-1x2 | 21500 | 40270 | 6920 | 16'-0 3/8" | 9'-9 5/8" | 8'-7 7/8" | 6'-9 5/8" |
| PT2-1218A-2x2 | 22900 | 41670 | 7615 | 17'-0 3/8" | 10'-9 5/8" | 9'-7 7/8" | 6'-9 5/8" |
| PT2-1218A-3x2 | 24030 | 42800 | 8180 | 18'-0 3/8" | 11'-9 5/8" | 10'-7 7/8" | 6'-9 5/8" |
| PT2-1218A-4x2 | 24620 | 43918 | 8180 | 19'-2 3/8" | 12'-11 5/8" | 10'-7 7/8" | 7'-11 5/8" |
| PT2-1218A-5x2 | 27762 | 47060 | 9751 | 19'-10 1/2" | 13'-11 5/8" | 11'-7 7/8" | 7'-11 5/8" |

ORDER NO:

DATE:



BALTIMORE AIRCOIL COMPANY

**Unit Print
PT2 Two Cell 12'x36'**

DRAWING NUMBER: