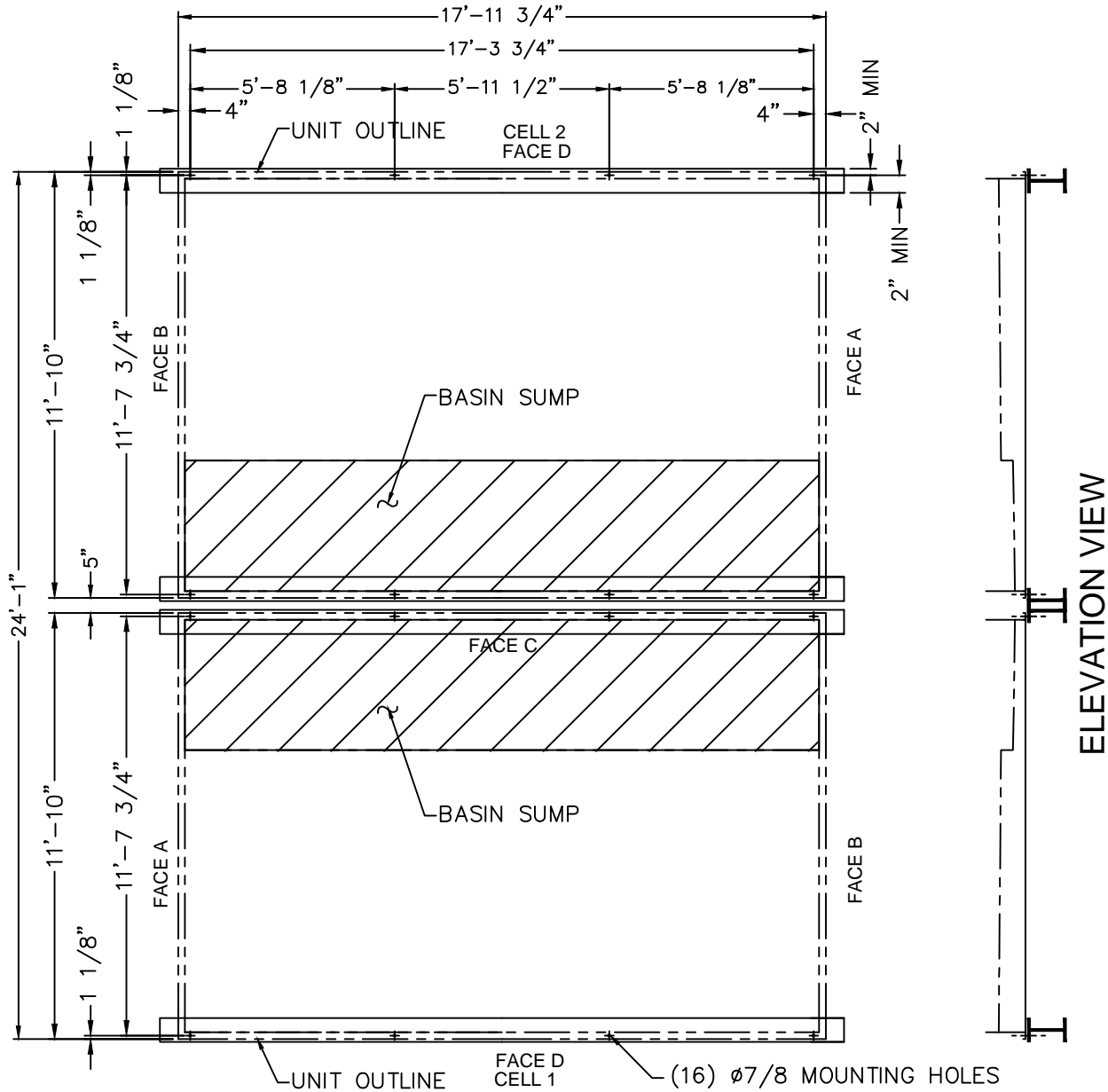


PLAN VIEW



Notes

- 1) Drawings are not to scale. All dimensions are in feet and inches. Weights are in pounds and include options and accessories.
- 2) Operating weight and weight loading are for units with water level in basin at overflow.
- 3) Unit support beams and anchor bolts to be designed and furnished by others.
- 4) Support beams must be flush and level at top.
- 5) All supporting steelwork must be designed in accordance with accepted structural practice. Maximum deflection of steelwork under unit to be 1/360 of span, not to exceed 1/2".
- 6) Each beam should be designed, as a minimum, for 65% of the total unit operation weight applied as a uniformly distributed load.

PLAN A STEEL SUPPORT

Model Number	Approx. Shipping Weight	Approx. Operating Weight
PCC-0988-2418N080	46300	68420
PCC-0762-2418N030	47790	70030
PCC-0882-2418N040	52370	74890
PCC-1062-2418N080	53110	75630
PCC-1128-2418N100	53320	75840
PCC-0938-2418N040	59560	82640
PCC-1034-2418N060	60060	83140
PCC-1082-2418N080	57340	80230
PCC-1144-2418N080	63840	87140
PCC-1180-2418N100	60510	83590
PCC-1218-2418N100	64050	87350
PCC-1278-2418N120	64250	87550

ORDER NO:

DATE:



BALTIMORE AIRCOIL COMPANY

**PCC Evaporative Condenser
Tabulated Steel Support - Plan A**

DRAWING NUMBER:
SS-PCI-2418