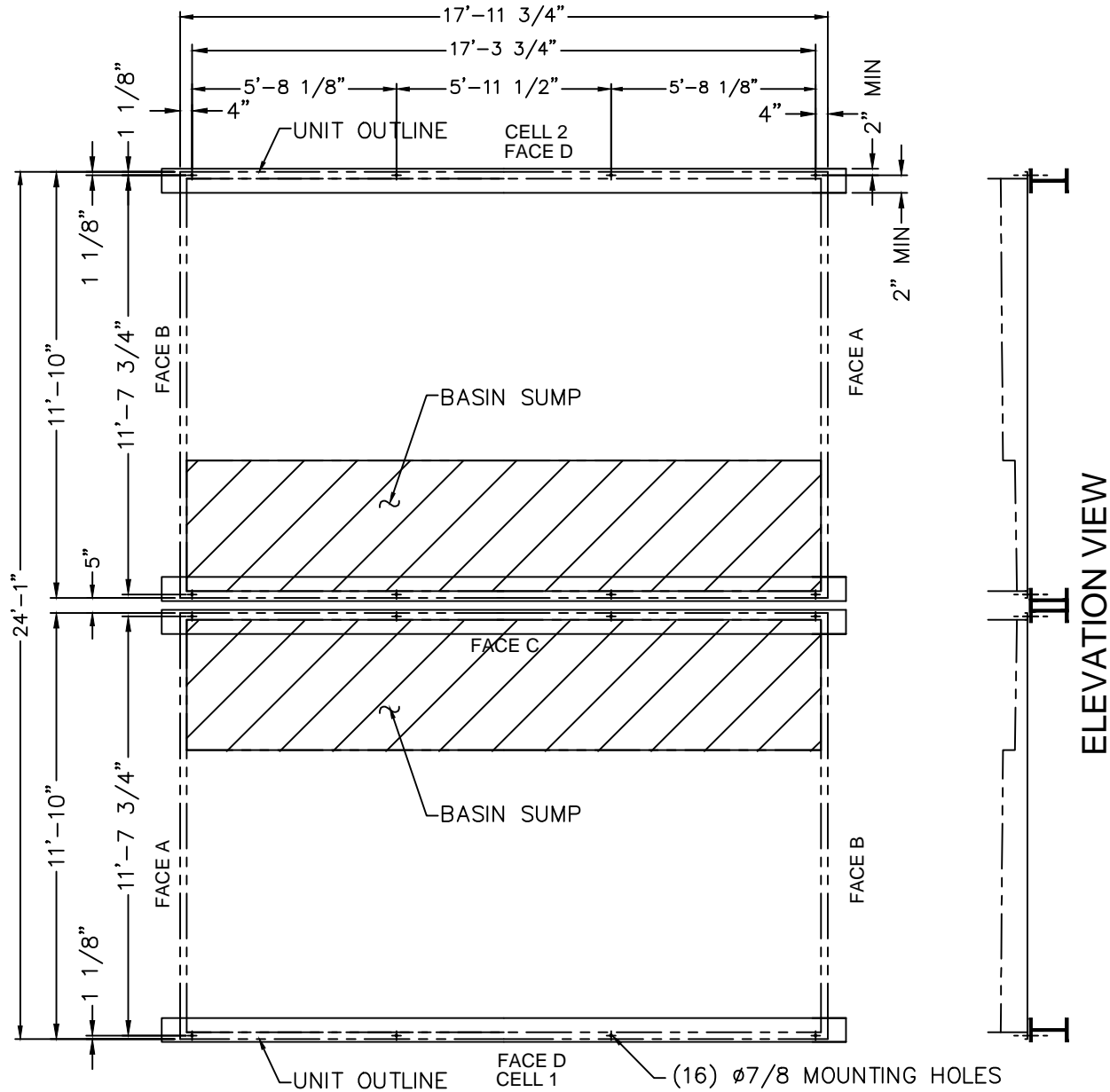


Notes

- 1) Drawings are not to scale. All dimensions are in feet and inches. Weights are in pounds and include options and accessories.
- 2) Operating weight and weight loading are for units with water level in basin at overflow.
- 3) Unit support beams and anchor bolts to be designed and furnished by others.
- 4) Support beams must be flush and level at top.
- 5) All supporting steelwork must be designed in accordance with accepted structural practice. Maximum deflection of steelwork under unit to be 1/360 of span, not to exceed 1/2".
- 6) Each beam should be designed, as a minimum, for 65% of the total unit operation weight applied as a uniformly distributed load.

Model Number	Approx, Shipping Weight	Approx, Operating Weight
PFI-2418N-2DXDS-X2	38600	58980
PFI-2418N-2DXES-X2	40060	60520
PFI-2418N-2DXDS-X2	41320	62650
PFI-2418N-2DXES-X2	43020	64450
PFI-2418N-3DXDS-X2	42160	64140
PFI-2418N-3DXES-X2	45110	67160
PFI-2418N-3DXDS-X2	44090	66720
PFI-2418N-3DXES-X2	46730	69430
PFI-2418N-3DXDS-X2	45650	68920
PFI-2418N-3DXES-X2	47570	70920
PFI-2418N-3DXDS-X2	47530	71570
PFI-2418N-3DXES-X2	50290	74420
PFI-2418N-4DXES-X2	52510	77460
PFI-2418N-4DXDS-X2	51820	77550
PFI-2418N-4DXES-X2	54200	80010
PFI-2418N-4DXDS-X2	54280	81040
PFI-2418N-4DXES-X2	57150	84000
PFI-2418N-5DXES-X2	57670	84850
PFI-2418N-6DXES-X2	66880	97600

PLAN VIEW



ORDER NO:

DATE:



BALTIMORE AIRCOIL COMPANY

**PFI Evaporative Fluid Cooler
Tabulated Steel Support - Plan A**

DRAWING NUMBER:
SS-PFI-2418