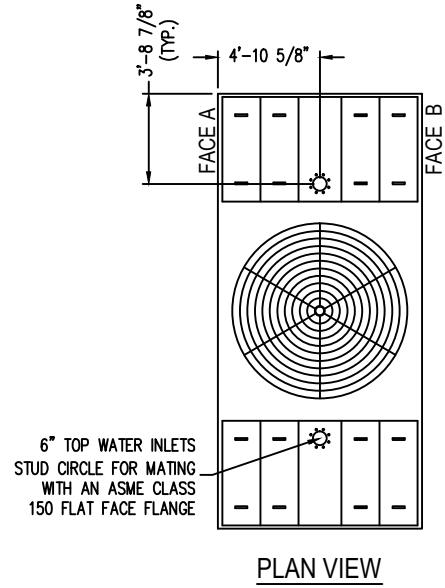


- Notes
- 1) Drawings are not to scale. All dimensions are in feet and inches. Weights are in pounds and include options and accessories.
 - 2) Unless otherwise indicated, connections 3" and smaller are MPT. Connections 4" and larger are grooved to suit a mechanical coupling and beveled for welding.
 - 3) Field piping should be fabricated at time of installation. Pre-fabrication of pipe work is not recommended.
 - 4) Do not support piping from unit connections. All necessary piping supports to be supplied by others.
 - 5) For weight loadings and support requirements, refer to the suggested unit support drawing.
 - 6) The area above the fan discharge must be unobstructed.
 - 7) Due to height limitations on truck shipments, some items shown may ship loose for field installation.
 - 8) Outlet connections are sized for pump suction application at the design flow rate. They are based on the maximum flow rate through the strainer with basin water at standard operating level.

MODEL NUMBER	SHIPPING WEIGHT	OPERATING WEIGHT	HEAVIEST SECTION WEIGHT
XES3E-1020-07G	9,744	20,038	9,744
XES3E-1020-07H	9,754	20,048	9,754
XES3E-1020-07J	9,784	20,078	9,784
XES3E-1020-07K	9,794	20,088	9,794
XES3E-1020-07L	9,864	20,158	9,864
S3E-1020-07M	9,884	20,178	9,884
S3E-1020-07N	10,024	20,318	10,024
S3E-1020-07O	10,074	20,368	10,074
S3E-1020-07P	10,234	20,528	10,234



3000E Unit Print
One Piece Units

DRAWING NUMBER:
UP-1020-07

ORDER NO:

DATE: **7/25/2013**