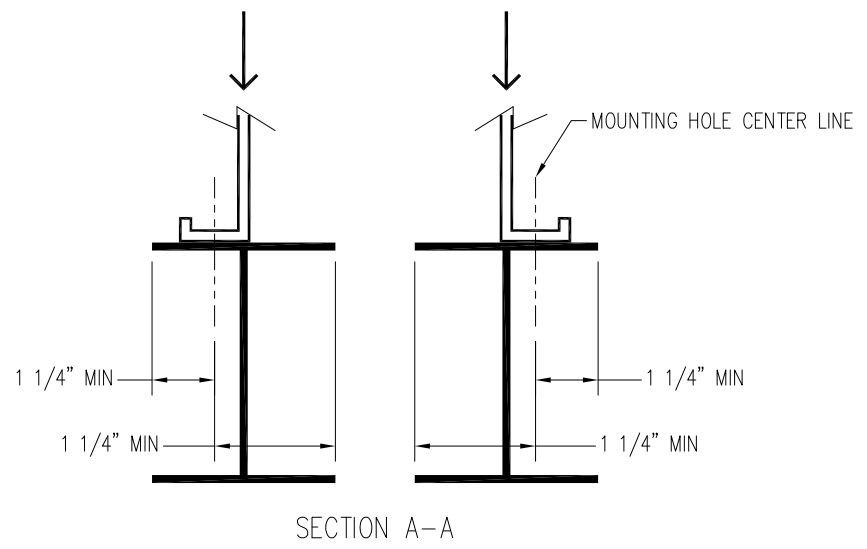


MODEL NUMBER	APPROX. SHIPPING WEIGHT	APPROX. OPERATING WEIGHT
VRC-0538B-1024N-HB	24,650	33,360
VRC-0595B-1024N-JB	24,650	33,360
VRC-0601B-1024N-HB	26,440	35,320
VRC-0665B-1024N-JB	26,440	35,320
VRC-0646B-1024N-HB	30,210	39,270
VRC-0713B-1024N-JB	30,210	39,270
VRC-0693B-1024N-HB	31,770	40,980
VRC-0766B-1024N-JB	31,770	40,980

- Notes
- 1) Drawings are not to scale.
 - 2) All dimensions are in feet and inches. Weights are in pounds and include options and accessories.
 - 3) Operating weight and weight loading are for units with water level in cold water basin at overflow.
 - 4) Unit support beams and anchor bolts to be designed and furnished by others. Minimum dimensions shown in Section A-A are provided only to ensure proper support of unit.
 - 5) Support beams must be flush and level at top.
 - 6) Support beams are not limited to an I-beam shape.
 - 7) Each beam should be designed, as a minimum, for 65% of the total unit operating weight applied as a uniformly distributed load.
 - 8) If vibration isolators are used, they should be installed under the support beams and should never have direct contact with the unit.



ORDER NO: _____

DATE: _____



**Vertex™ Evaporative Condenser
10x24 Two Cell Unit Support**

DRAWING NUMBER: _____