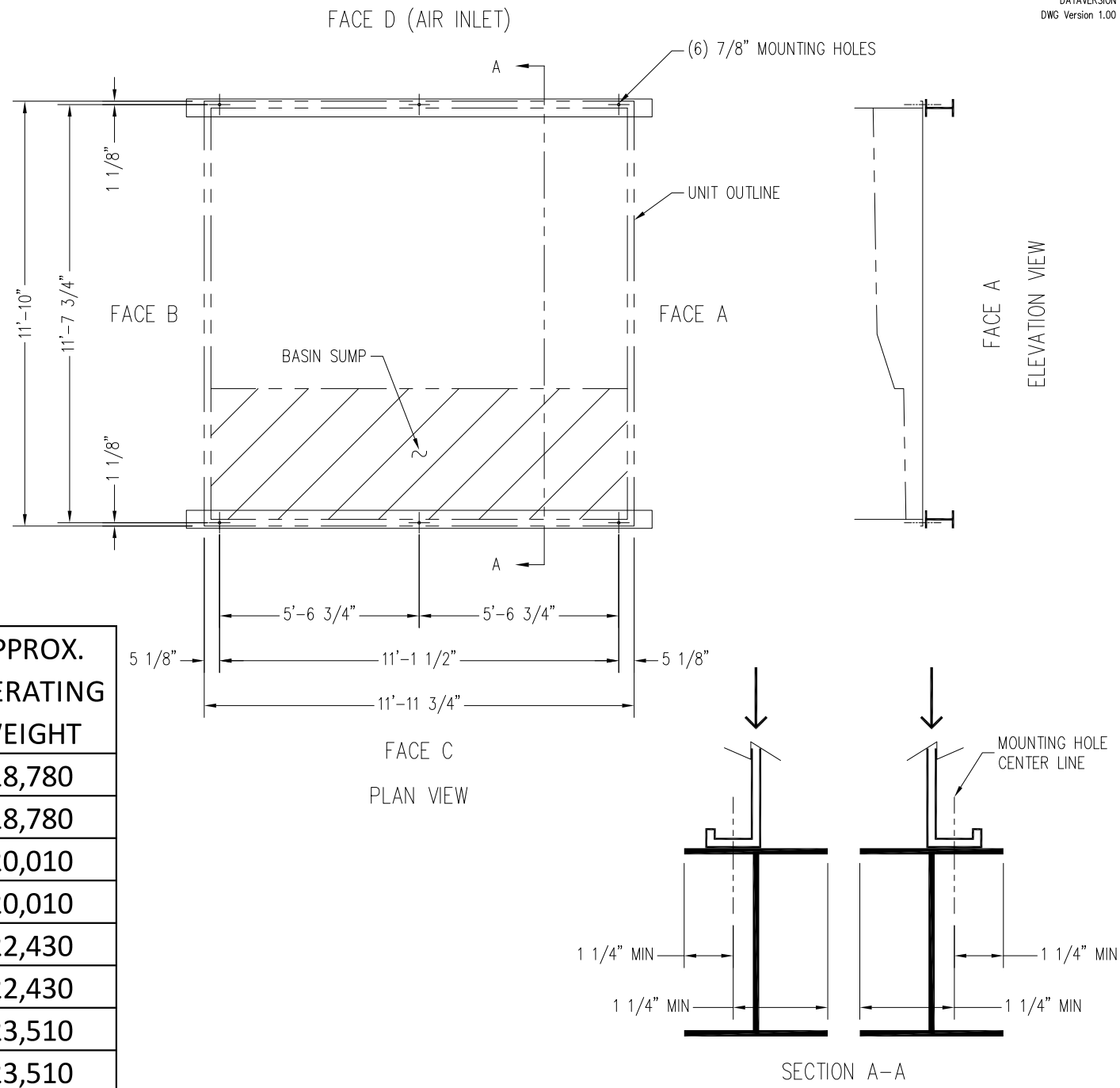


Notes

- 1) Drawings are not to scale.
- 2) All dimensions are in feet and inches. Weights are in pounds and include options and accessories.
- 3) Operating weight and weight loading are for units with water level in cold water basin at overflow.
- 4) Unit support beams and anchor bolts to be designed and furnished by others. Minimum dimensions shown in Section A-A are provided only to ensure proper support of unit.
- 5) Support beams must be flush and level at top.
- 6) Support beams are not limited to an I-beam shape.
- 7) Each beam should be designed, as a minimum, for 65% of the total unit operating weight applied as a uniformly distributed load.
- 8) If vibration isolators are used, they should be installed under the support beams and should never have direct contact with the unit.



MODEL NUMBER	APPROX. SHIPPING WEIGHT	APPROX. OPERATING WEIGHT
VRC-0314B-1212N-HB	14,000	18,780
VRC-0348B-1212N-JB	14,000	18,780
VRC-0347B-1212N-HB	15,120	20,010
VRC-0383B-1212N-JB	15,120	20,010
VRC-0378B-1212N-HB	17,430	22,430
VRC-0418B-1212N-JB	17,430	22,430
VRC-0405B-1212N-HB	18,410	23,510
VRC-0448B-1212N-JB	18,410	23,510

ORDER NO:

DATE:



**BALTIMORE AIRCOIL COMPANY**

**Vertex™ Evaporative Condenser  
Single Cell Unit Support**

DRAWING NUMBER: