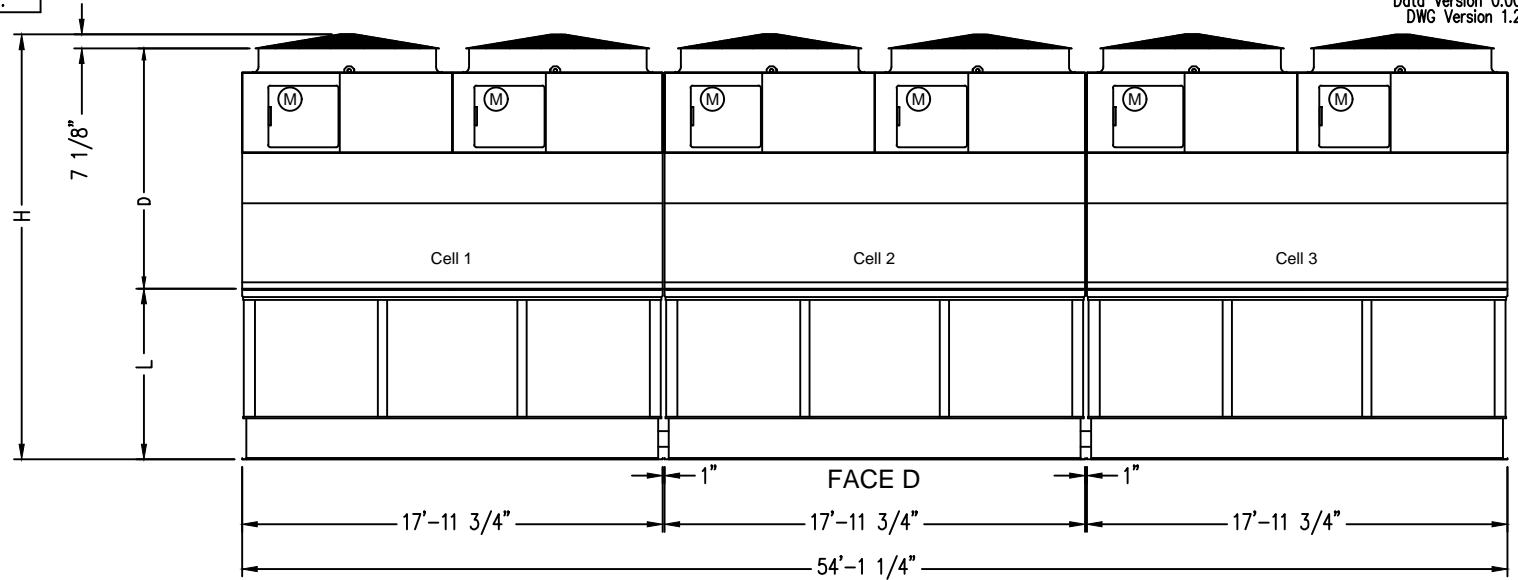
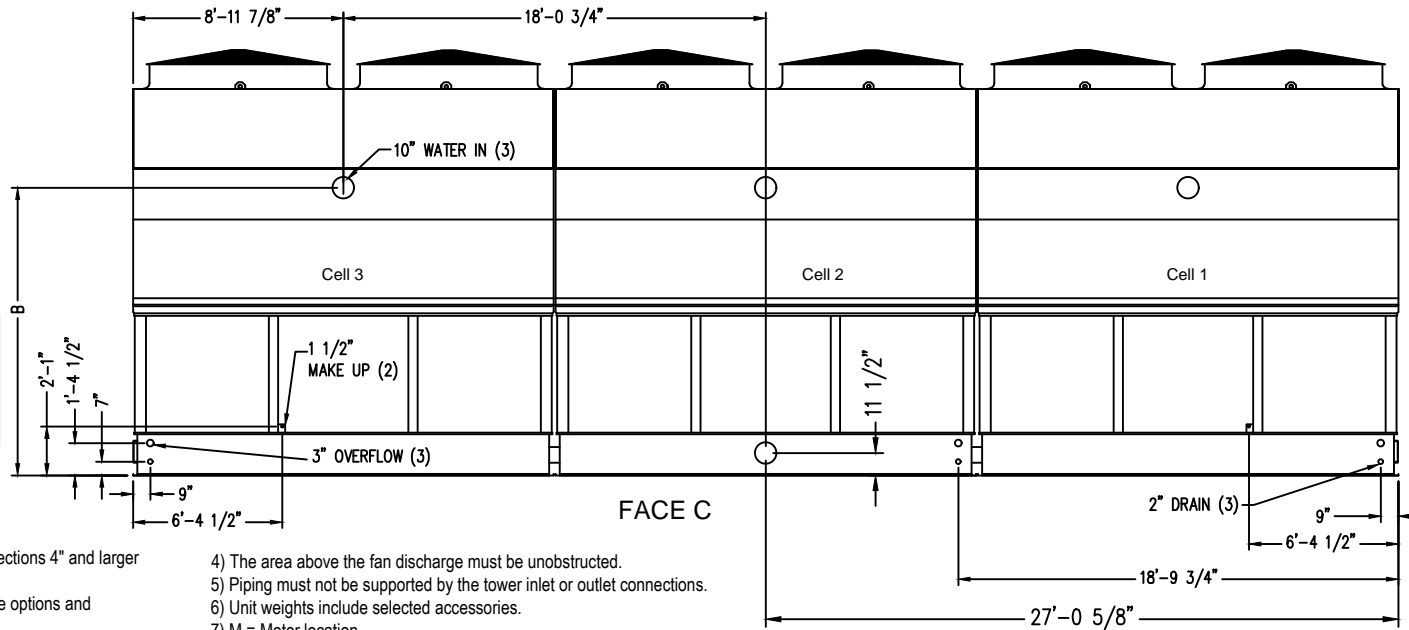


FACE A



FACE D



FACE C

Model Number	Shipping Weight	Operating Weight	Heaviest Section	"H"	"B"	"D"	"L"
PT2-1218A-1x3	32450	60610	6920	16'-6 3/8"	10'-3 5/8"	8'-7 7/8"	7'-3 5/8"
PT2-1218A-2x3	34545	62705	7615	17'-6 3/8"	11'-3 5/8"	9'-7 7/8"	7'-3 5/8"
PT2-1218A-3x3	36240	64400	8180	18'-6 3/8"	12'-3 5/8"	10'-7 7/8"	7'-3 5/8"
PT2-1218A-4x3	37343	65915	8180	20'-4 3/8"	14'-1 5/8"	10'-7 7/8"	9'-1 5/8"
PT2-1218A-5x3	42468	71453	9751	21'-0 1/2"	15'-1 5/8"	11'-7 7/8"	9'-1 5/8"

Notes

- 1) Unless otherwise indicated, connections 3" and smaller are NPT. Connections 4" and larger are grooved to suit a mechanical coupling and beveled for welding.
- 2) All dimensions are in feet and inches. Weights are in pounds and include options and accessories.
- 3) For weight loadings and support requirements, refer to the suggested steel support drawing.

- 4) The area above the fan discharge must be unobstructed.
- 5) Piping must not be supported by the tower inlet or outlet connections.
- 6) Unit weights include selected accessories.
- 7) M = Motor location.
- 8) Heaviest section is a cell's mechanical section mounted to fill casing section.

ORDER NO:

DATE:



BALTIMORE AIRCOIL COMPANY

**Unit Print
PT2 Three Cell 12'x54'**

DRAWING NUMBER: