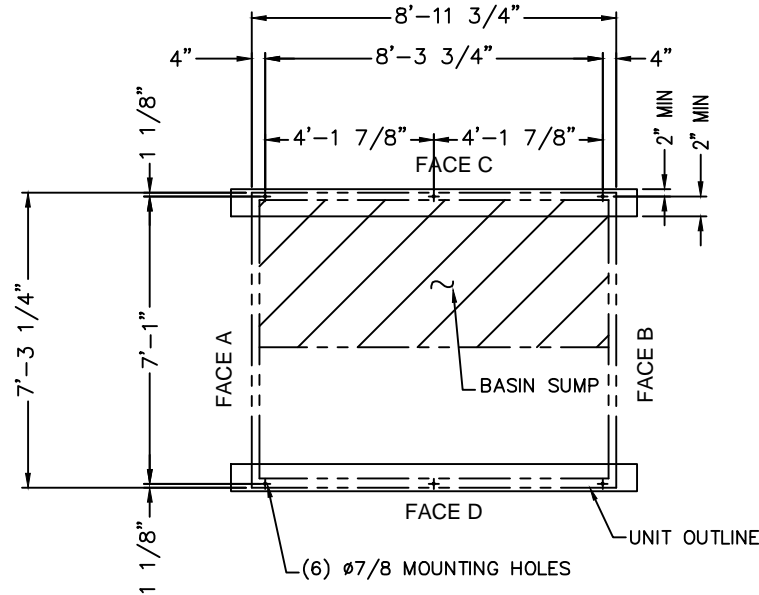
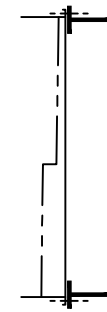


PLAN VIEW



ELEVATION VIEW



Model Number	Approx. Shipping Weight	Approx. Operating Weight
PCC-0113-0709N010	6890	10260
PCC-0117-0709N7.5	7550	10970
PCC-0142-0709N015	7550	10970
PCC-0122-0709N7.5	7790	11220
PCC-0154-0709N015	8710	12190
PCC-0160-0709N020	8450	11910
PCC-0166-0709N020	8770	12250
PCC-0175-0709N020	9500	12990
PCC-0130-0709N7.5	9140	12640
PCC-0184-0709N020	11220	14820

Notes

- 1) Drawings are not to scale. All dimensions are in feet and inches. Weights are in pounds and include options and accessories.
- 2) Operating weight and weight loading are for units with water level in basin at overflow.
- 3) Unit support beams and anchor bolts to be designed and furnished by others.
- 4) Support beams must be flush and level at top.
- 5) All supporting steelwork must be designed in accordance with accepted structural practice. Maximum deflection of steelwork under unit to be 1/360 of span, not to exceed 1/2".
- 6) Each beam should be designed, as a minimum, for 65% of the total unit operation weight applied as a uniformly distributed load.

ORDER NO:

DATE:



BALTIMORE AIRCOIL COMPANY

**PCC Evaporative Condenser
Tabulated Steel Support - Plan A**

DRAWING NUMBER:
SS-PCI-0709