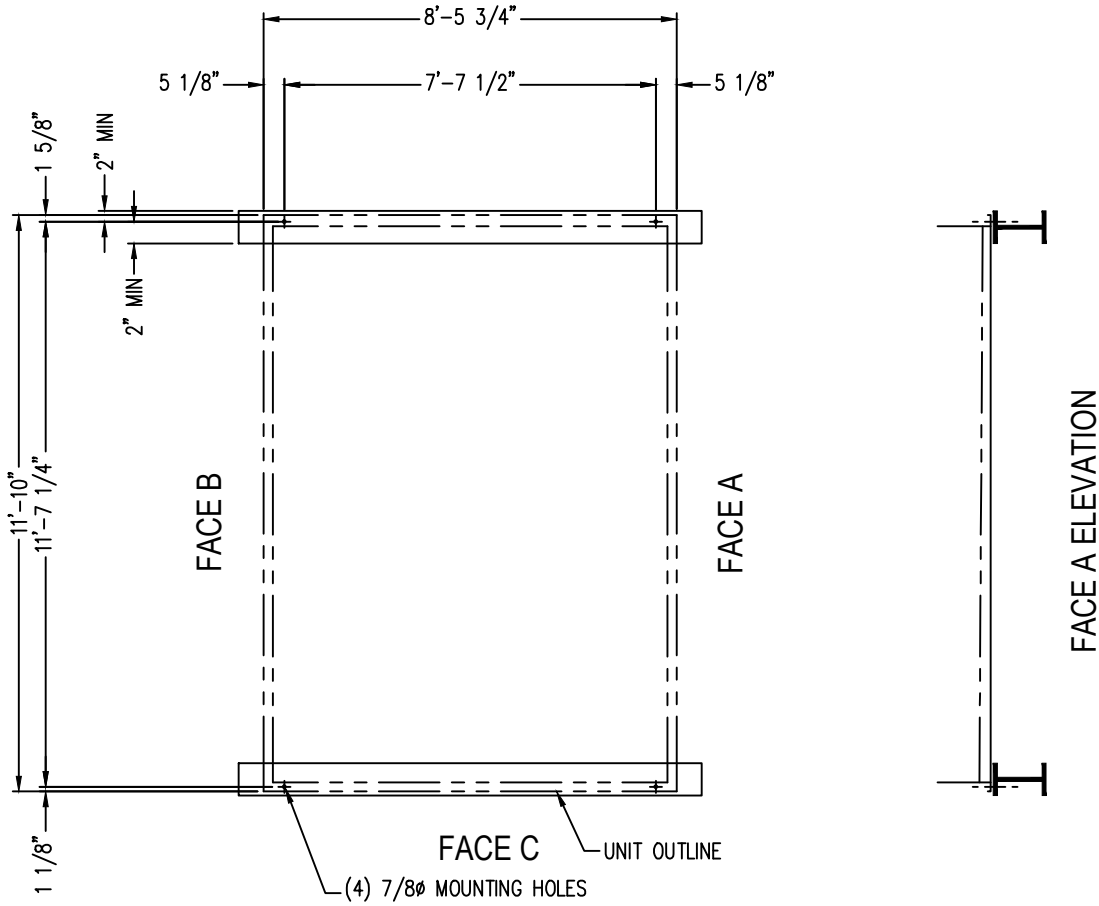


Notes

- 1) All dimensions are in feet and inches. Weights are in pounds. Values listed are for standard construction units with no additional options and accessories; exact values may vary depending upon unit configuration.
- 2) Operating weight and weight loading are for units with water level in basin at overflow.
- 3) Unit support beams and anchor bolts to be designed and furnished by others.
- 4) Support beams must be flush and level at top.
- 5) Each beam should be designed, as a minimum, for 65% of the total unit operation weight applied as a uniformly distributed load.

PLAN VIEW
FACE D (AIR INLET)



Model Number	Operating Weight	Shipping Weight
XES15E-1285-06EN	8990	4200
XES15E-1285-06FN	9010	4220
XES15E-1285-06GN	9040	4250
XES15E-1285-06HN	9050	4260
S15E-1285-06JN	9100	4310
S15E-1285-06KN	9110	4320
S15E-1285-06LN	9240	4450
XES15E-1285-07EN	9540	4510
XES15E-1285-07FN	9560	4530
XES15E-1285-07GN	9590	4560
XES15E-1285-07HN	9600	4570
XES15E-1285-07JN	9650	4620
S15E-1285-07KN	9670	4640
S15E-1285-07LN	9790	4760
S15E-1285-07MN	9850	4820

ORDER NO:

DATE: **3/18/2014**



**BALTIMORE
AIRCOIL COMPANY**

**Single Cell Unit Support
1285-06-07 Plan "A" Steel**

DRAWING NUMBER:
SS-XE-S15E-1285-06-07