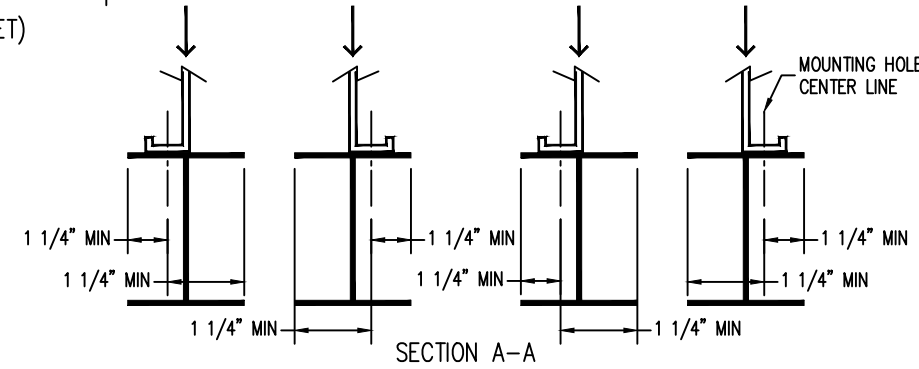
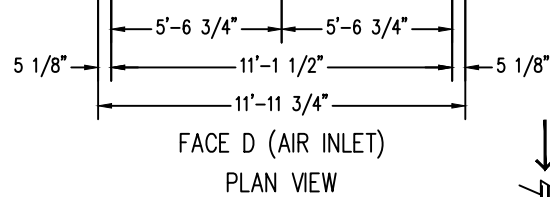
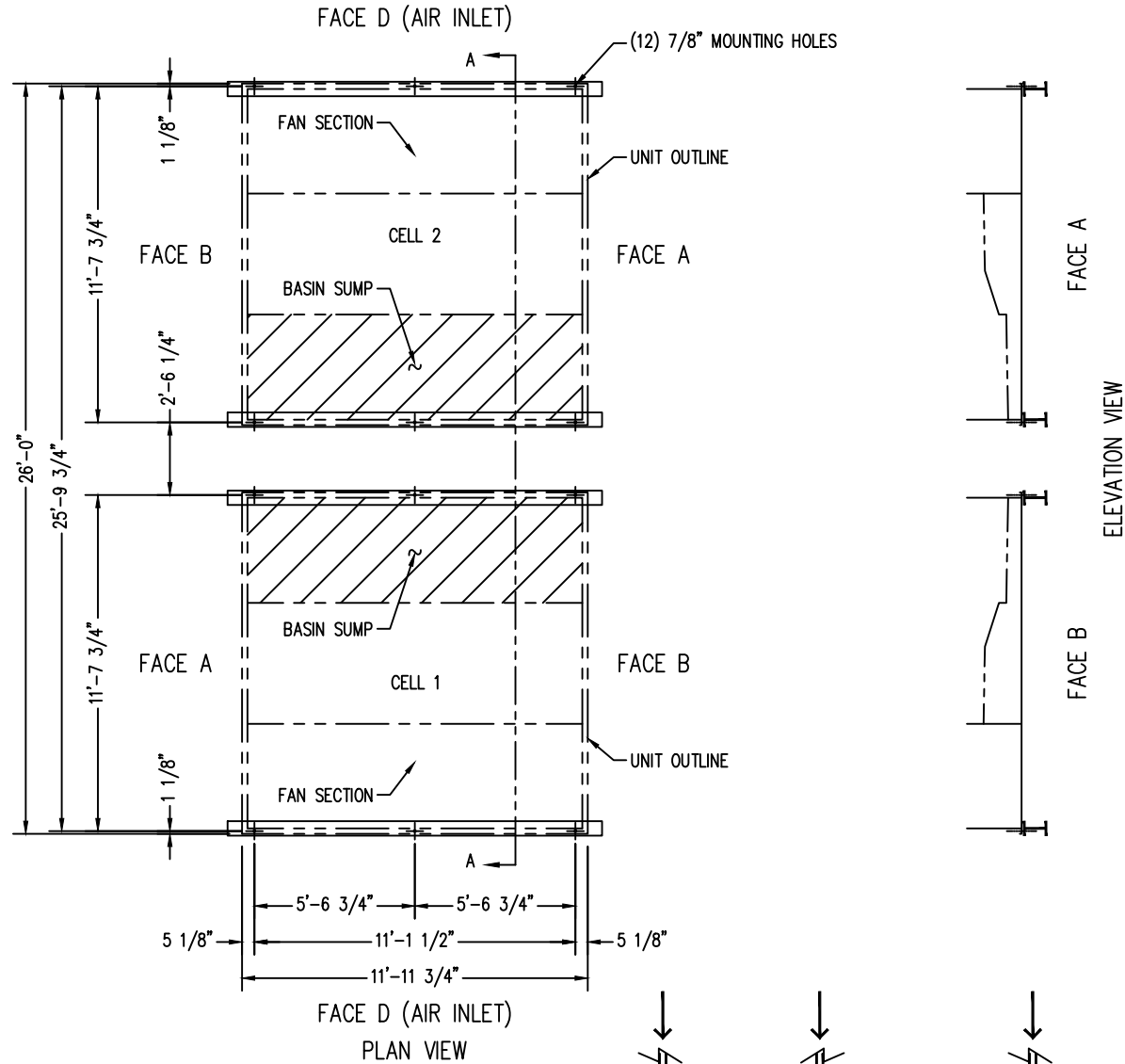


Notes

- 1) Drawings are not to scale.
- 2) All dimensions are in feet and inches. Weights are in pounds and include options and accessories.
- 3) Operating weight and weight loading are for units with water level in cold water basin at overflow.
- 4) Unit support beams and anchor bolts to be designed and furnished by others. Minimum dimensions shown in Section A-A are provided only to ensure proper support of unit.
- 5) Support beams must be flush and level at top.
- 6) Support beams are not limited to an I-beam shape.
- 7) Each beam should be designed, as a minimum, for 65% of the total unit operating weight applied as a uniformly distributed load.
- 8) If vibration isolators are used, they should be installed under the support beams and should never have direct contact with the unit.



| MODEL NO. | APPROX. SHIPPING WEIGHT | APPROX. OPERATING WEIGHT |
|--------------------|-------------------------|--------------------------|
| VRC-0429B-2412N-GA | 28590 | 38130 |
| VRC-0486B-2412N-HA | 28590 | 38120 |
| VRC-0535B-2412N-JA | 28840 | 38370 |
| VRC-0574B-2412N-KA | 28940 | 38470 |
| VRC-0541B-2412N-HA | 30830 | 40570 |
| VRC-0597B-2412N-JA | 31080 | 40820 |
| VRC-0641B-2412N-KA | 31170 | 40920 |
| VRC-0697B-2412N-KA | 35790 | 45770 |
| VRC-0768B-2412N-LA | 36440 | 46410 |
| VRC-0824B-2412N-MA | 36690 | 46660 |
| VRC-0763B-2412N-KA | 37760 | 47910 |
| VRC-0831B-2412N-LA | 38410 | 48560 |
| VRC-0889B-2412N-MA | 38660 | 48810 |
| VRC-0939B-2412N-NA | 38810 | 48970 |

ORDER NO: _____

DATE: _____



Vertex™ Evaporative Condenser
24x12 Two Cell Unit Support

DRAWING NUMBER: _____