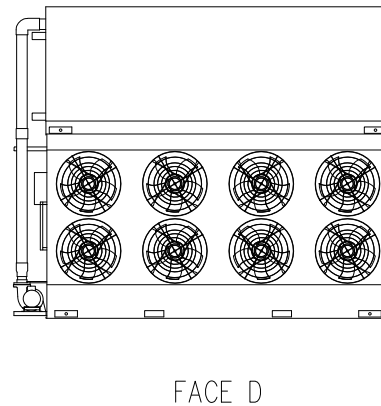
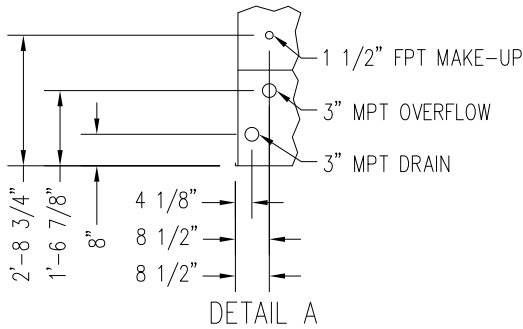
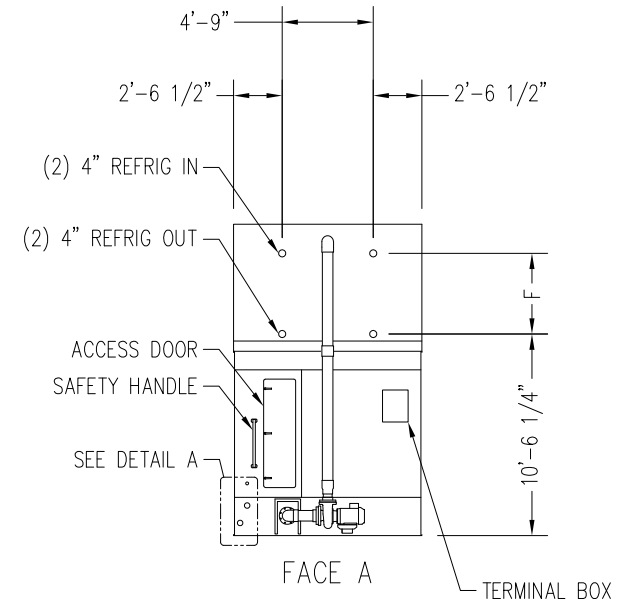
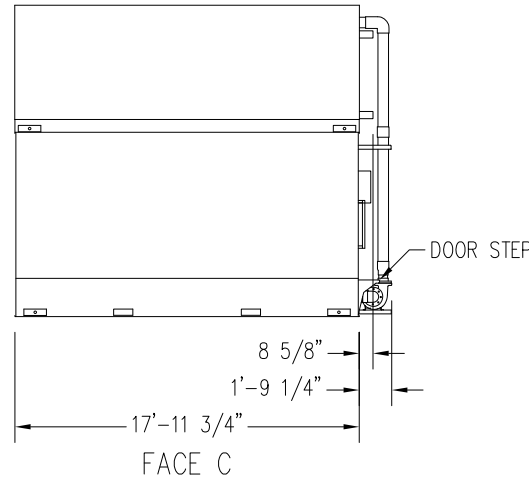
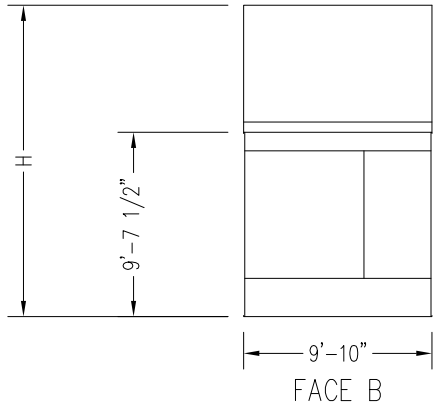
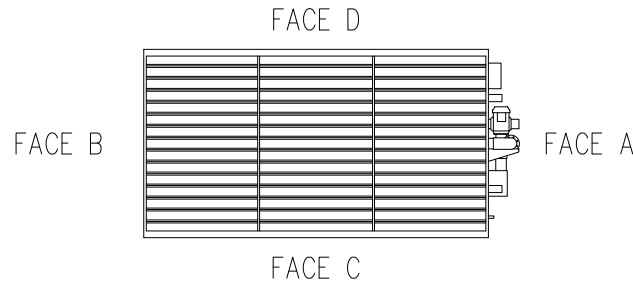


- Notes
- 1) Drawings are not to scale.
 - 2) Dimensions are in feet and inches. Weights are in pounds and include options and accessories.
 - 3) Unless otherwise indicated, connections 3" and smaller are MPT.
 - 4) Dimensions showing location of coil & basin connections are approximate and should not be used for prefabrication of connecting piping.
 - 5) For weight loadings and support requirements, refer to suggested steel support drawing.
 - 6) Area above the air discharge must be unobstructed.
 - 7) Field piping must not be supported by the unit inlet or outlet connections.



MODEL NUMBER	APPROX. SHIPPING WEIGHT	APPROX. OPERATING WEIGHT	HEAVIEST SECTION (COIL)	F	H
VRC-0399B-1018N-HB	16,400	22,780	9,340	3'-7"	15'-8"
VRC-0441B-1018N-JB	16,400	22,780	9,340	3'-7"	15'-8"
VRC-0435B-1018N-HB	17,740	24,260	10,680	3'-7"	15'-8"
VRC-0481B-1018N-JB	17,740	24,260	10,680	3'-7"	15'-8"
VRC-0476B-1018N-HB	20,090	26,740	13,030	4'-10"	16'-11"
VRC-0526B-1018N-JB	20,090	26,740	13,030	4'-10"	16'-11"
VRC-0511B-1018N-HB	21,240	28,000	14,170	4'-10"	16'-11"
VRC-0565B-1018N-JB	21,240	28,000	14,170	4'-10"	16'-11"

Right Hand Unit

ORDER NO:

DATE:



**BALTIMORE
AIRCOIL COMPANY**

**Vertex™ Evaporative Condenser
Single Cell Unit Print**

DRAWING NUMBER: