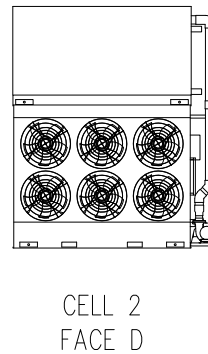
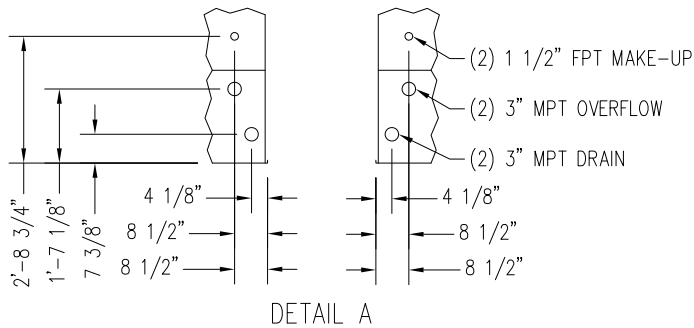
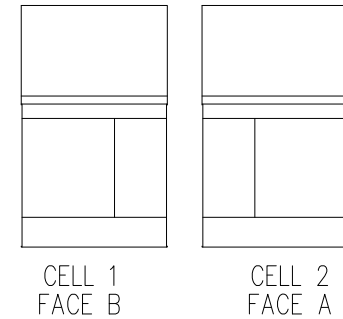
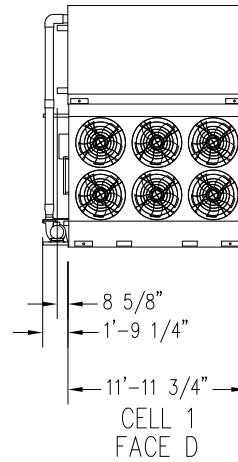
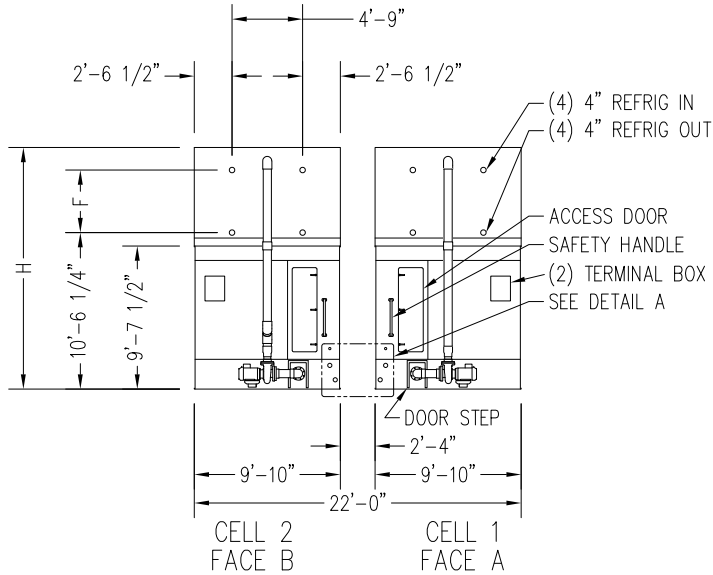
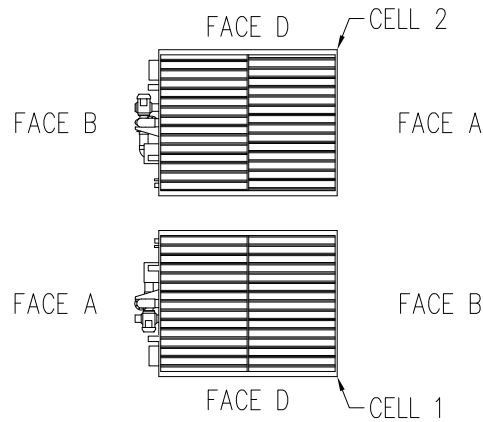


Notes

- 1) Drawings are not to scale.
- 2) Dimensions are in feet and inches. Weights are in pounds and include options and accessories.
- 3) Unless otherwise indicated, connections 3" and smaller are MPT.
- 4) Dimensions showing location of coil & basin connections are approximate and should not be used for prefabrication of connecting piping.
- 5) For weight loadings and support requirements, refer to suggested steel support drawing.
- 6) Area above the air discharge must be unobstructed.
- 7) Field piping must not be supported by the unit inlet or outlet connections.



MODEL NUMBER	APPROX. SHIPPING WEIGHT	APPROX. OPERATING WEIGHT	HEAVIEST SECTION (COIL)	F	H
VRC-0538B-2012N-HB	24,650	33,360	6,640	3'-7"	15'-8"
VRC-0595B-2012N-JB	24,650	33,360	6,640	3'-7"	15'-8"
VRC-0601B-2012N-HB	26,440	35,320	7,540	3'-7"	15'-8"
VRC-0646B-2012N-HB	30,210	39,270	9,420	4'-10"	16'-11"
VRC-0665B-2012N-JB	26,440	35,320	7,540	3'-7"	15'-8"
VRC-0693B-2012N-HB	31,770	40,980	10,200	4'-10"	16'-11"
VRC-0713B-2012N-JB	30,210	39,270	9,420	4'-10"	16'-11"
VRC-0766B-2012N-JB	31,770	40,980	10,200	4'-10"	16'-11"

Right & Left Hand Unit

ORDER NO:

DATE:



**BALTIMORE AIRCOIL COMPANY**

**Vertex™ Evaporative Condenser  
20x12 Two Cell Unit Print**

DRAWING NUMBER: