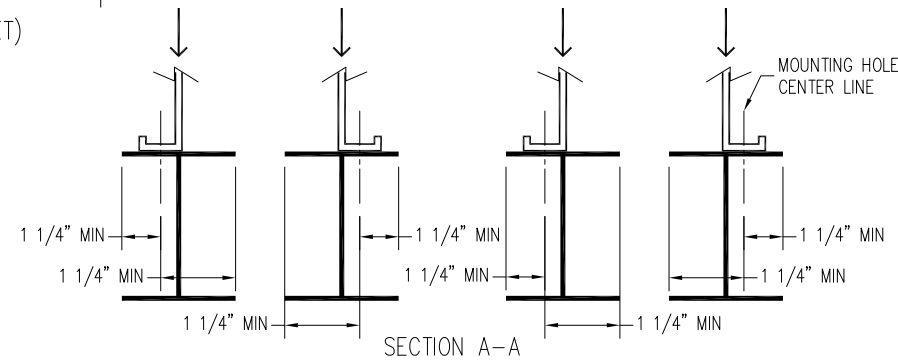
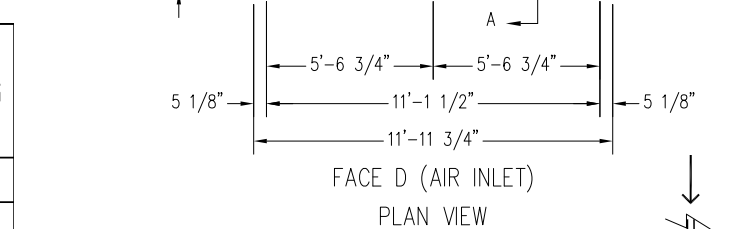
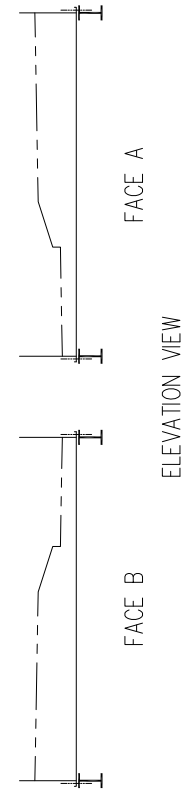
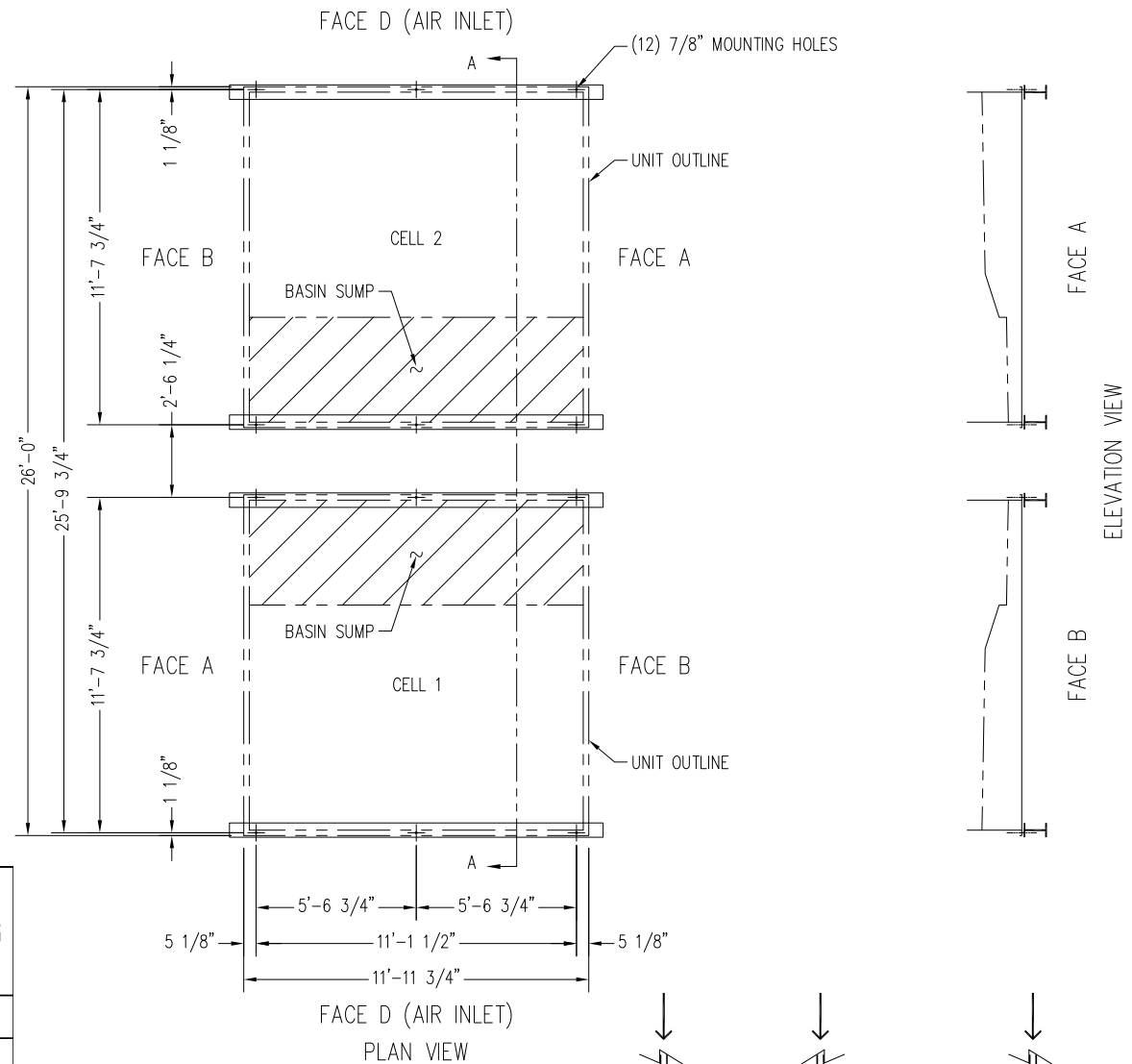


Notes

- 1) Drawings are not to scale.
- 2) All dimensions are in feet and inches. Weights are in pounds and include options and accessories.
- 3) Operating weight and weight loading are for units with water level in cold water basin at overflow.
- 4) Unit support beams and anchor bolts to be designed and furnished by others. Minimum dimensions shown in Section A-A are provided only to ensure proper support of unit.
- 5) Support beams must be flush and level at top.
- 6) Support beams are not limited to an I-beam shape.
- 7) Each beam should be designed, as a minimum, for 65% of the total unit operating weight applied as a uniformly distributed load.
- 8) If vibration isolators are used, they should be installed under the support beams and should never have direct contact with the unit.



MODEL NUMBER	APPROX. SHIPPING WEIGHT	APPROX. OPERATING WEIGHT
VRC-0628B-2412N-HB	27,990	37,560
VRC-0694B-2412N-HB	30,230	40,010
VRC-0695B-2412N-JB	27,990	37,560
VRC-0755B-2412N-HB	34,850	44,860
VRC-0767B-2412N-JB	30,230	40,010
VRC-0810B-2412N-HB	36,810	47,010
VRC-0835B-2412N-JB	34,850	44,860
VRC-0895B-2412N-JB	36,810	47,010

ORDER NO: _____

DATE: _____



**Vertex™ Evaporative Condenser
24x12 Two Cell Unit Support**

DRAWING NUMBER: _____